

Installing MySQL

This is a step by step guide for installing the MySQL database and MySQL Workbench, and the creation and population of the HARVESTER database.

CONTENTS

Downloading Software.....	1
Installing the MySQL Database Software.....	1
Installing MySQL Workbench.....	9
Creating and populating the Harvester Database.....	11

Downloading Software

All application software can be downloaded from the MySQL website. There are two applications that are required:

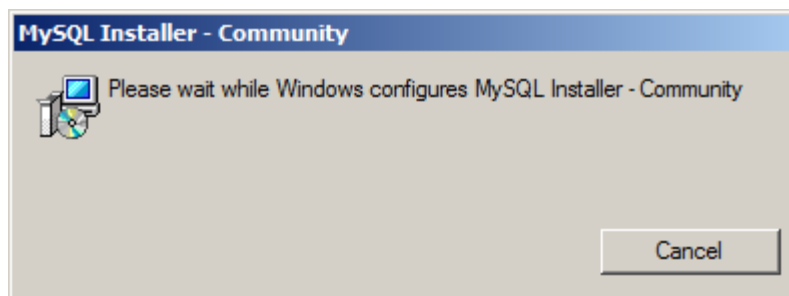
MySQL Database <https://dev.mysql.com/downloads/mysql/5.7.html>

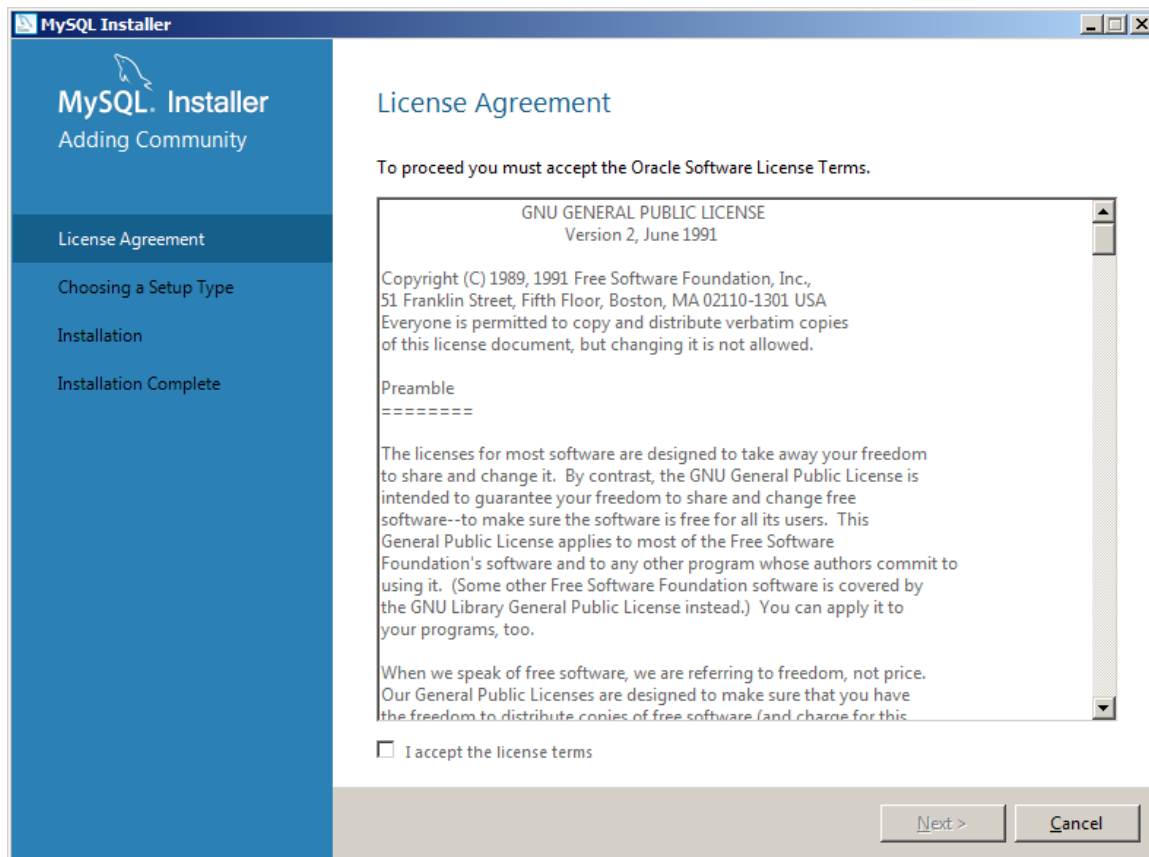
MSQL Workbench <https://dev.mysql.com/downloads/workbench/>

These instructions are designed for the MSI installer option so make sure you download the MySQL Installer for Windows option. If you are new to MySQL or don't feel confident installing on the commandline, then the MSI installer is the best option. Alternatively, if you are a more advanced user, you could opt of the ZIP Archive.

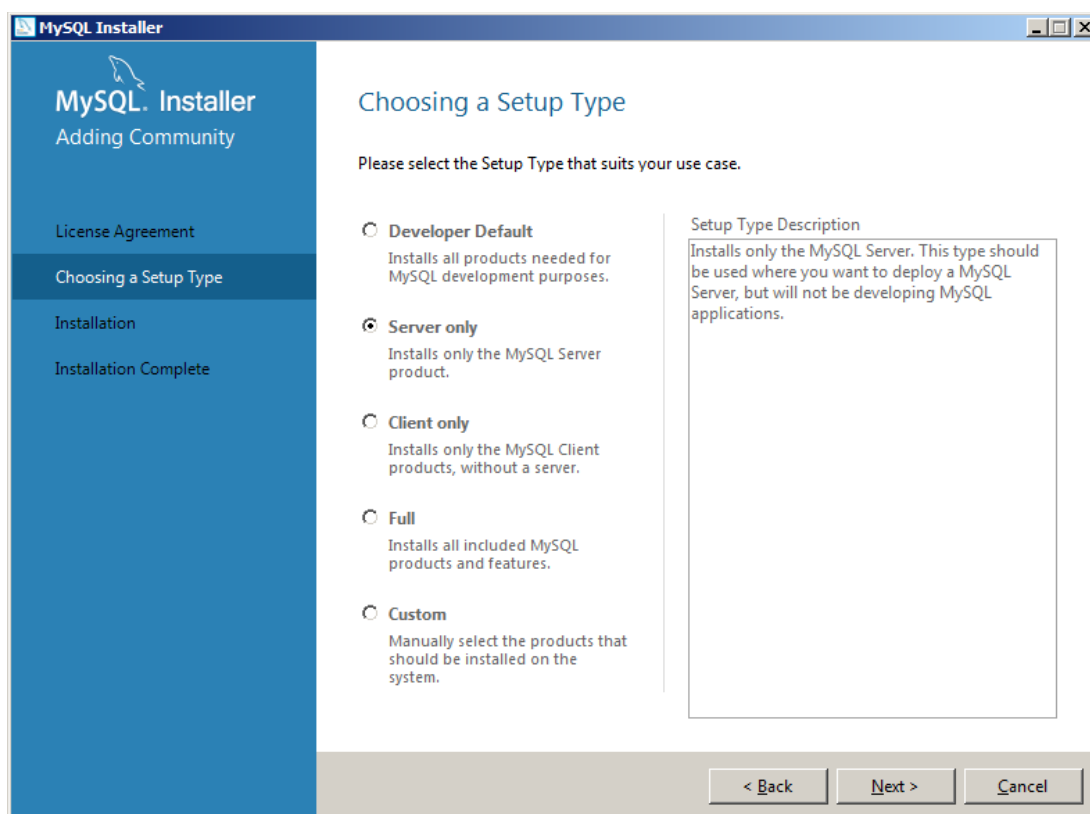
Installing the MySQL Database Software

Navigate to the downloaded MySQL database installation application, typically *mysql-installer-community-5.7.22.1.exe*, and run it.

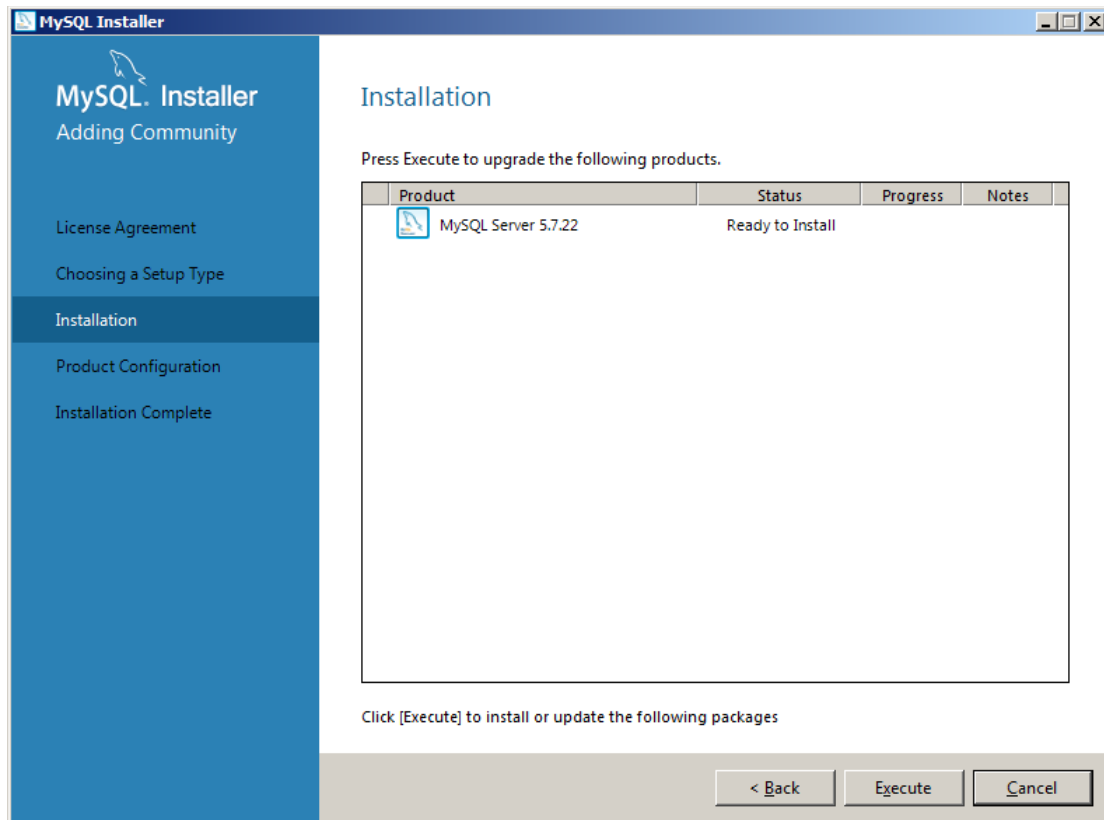




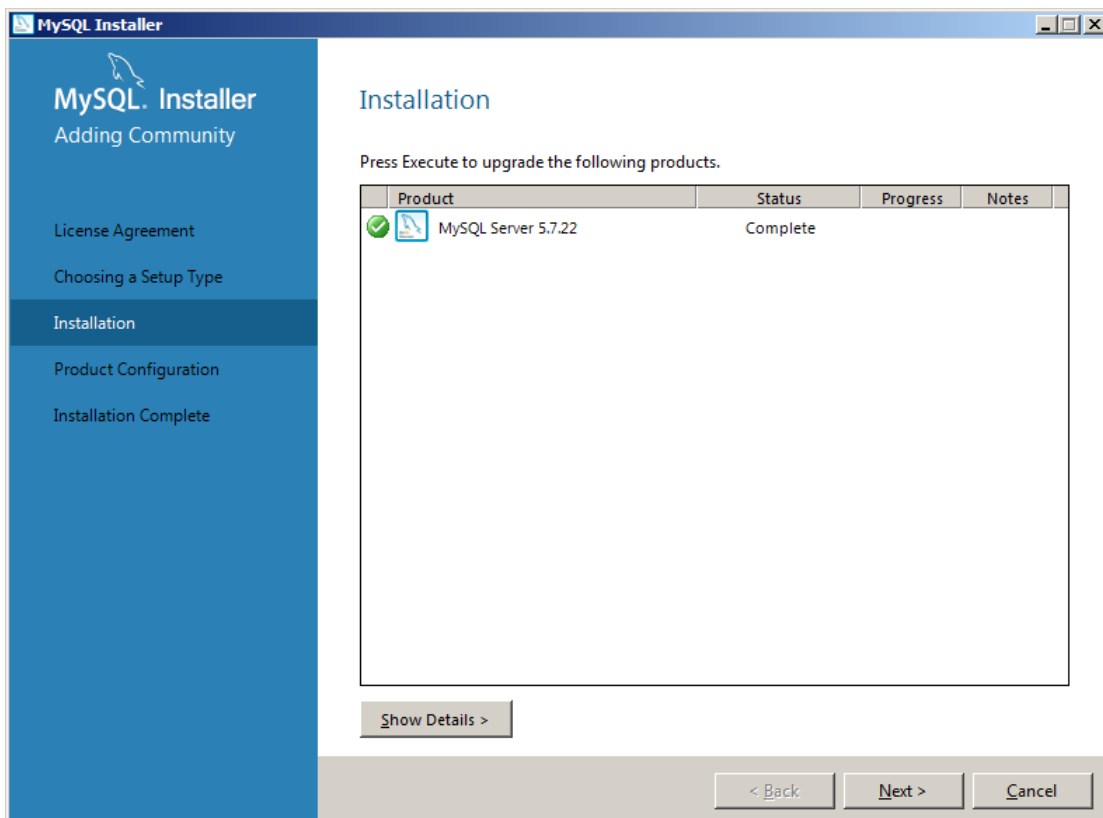
Read the licence agreement then click *I accept the licence terms* and click the *Next* button.



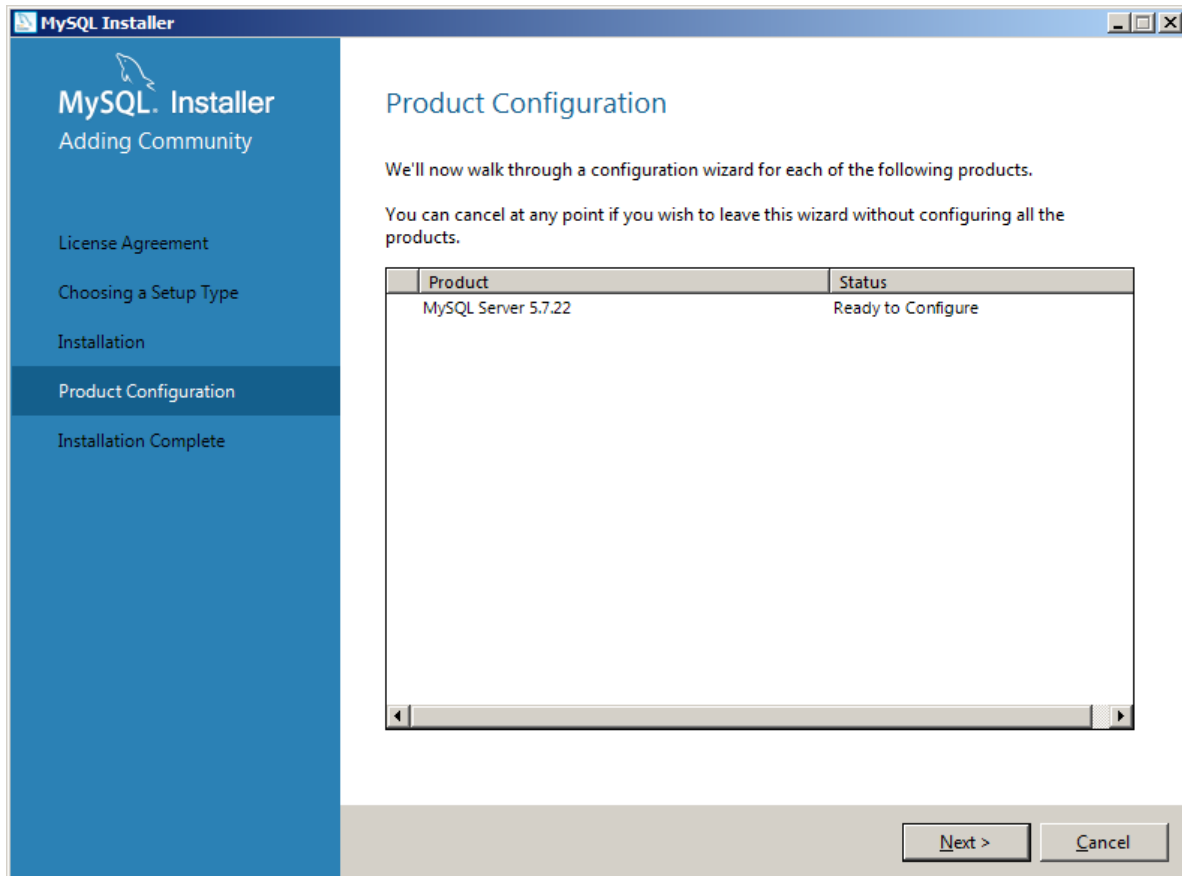
Select the *Server only* option and click *Next*.



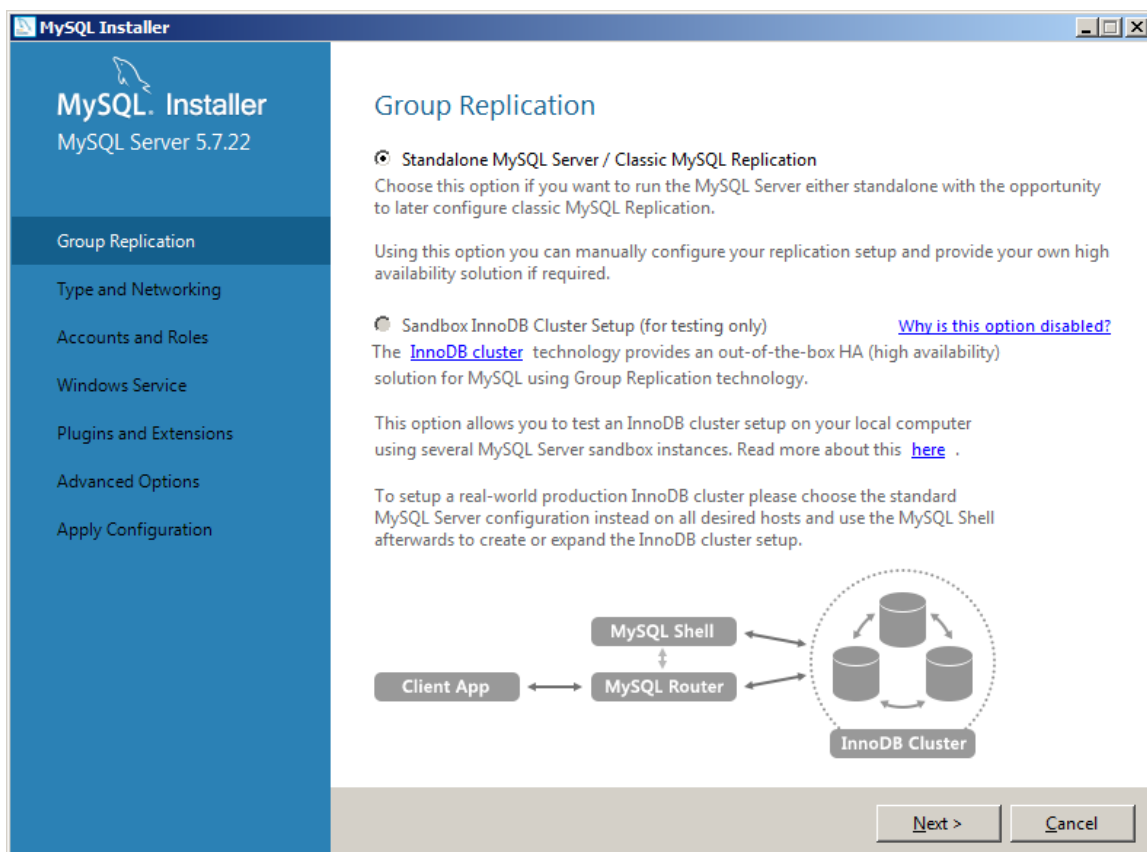
Click *Execute* to begin the installation.



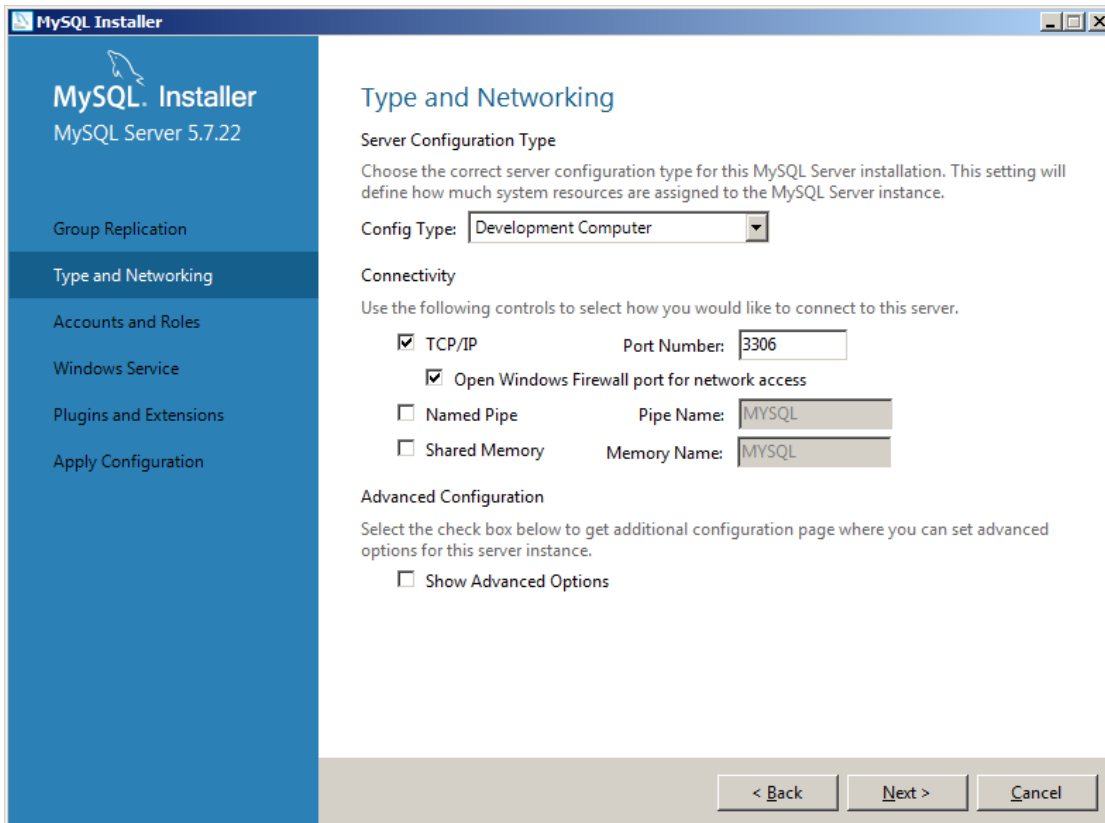
Installation takes a few moments.



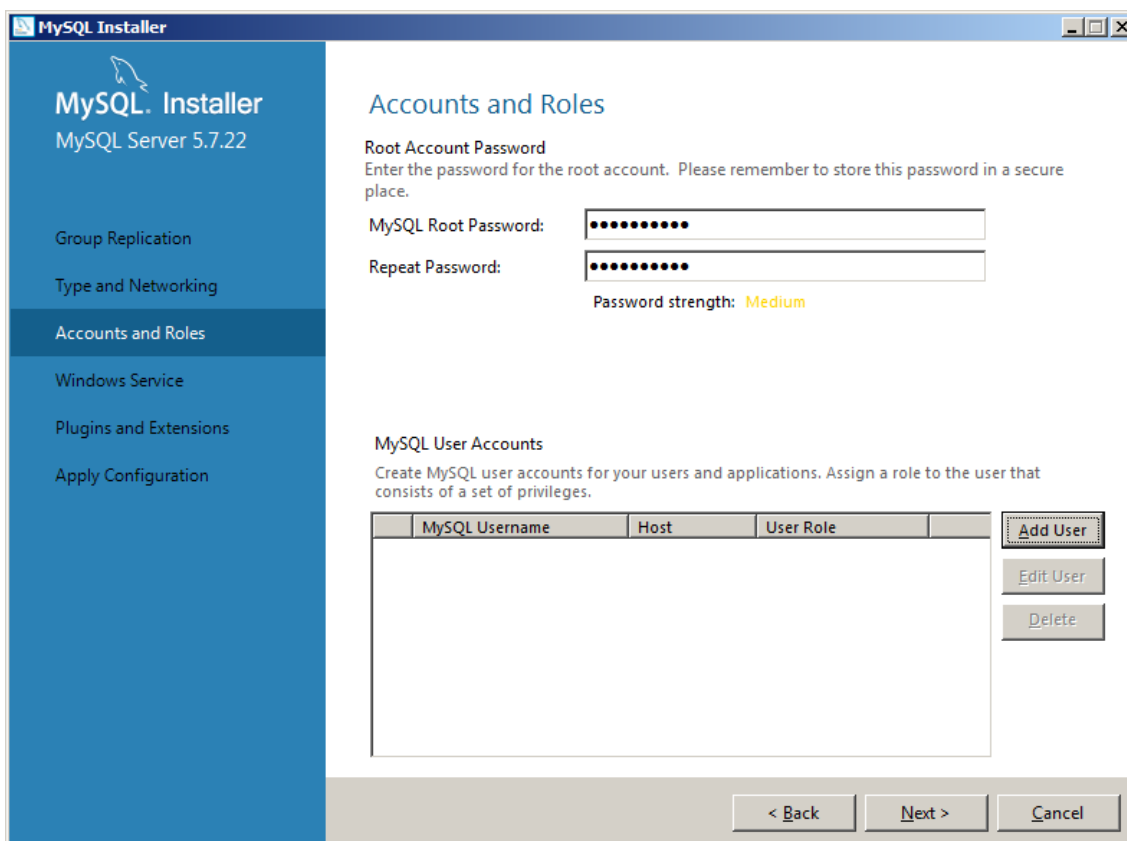
Click *Next* to begin configuration of MySQL. Most options are default settings.



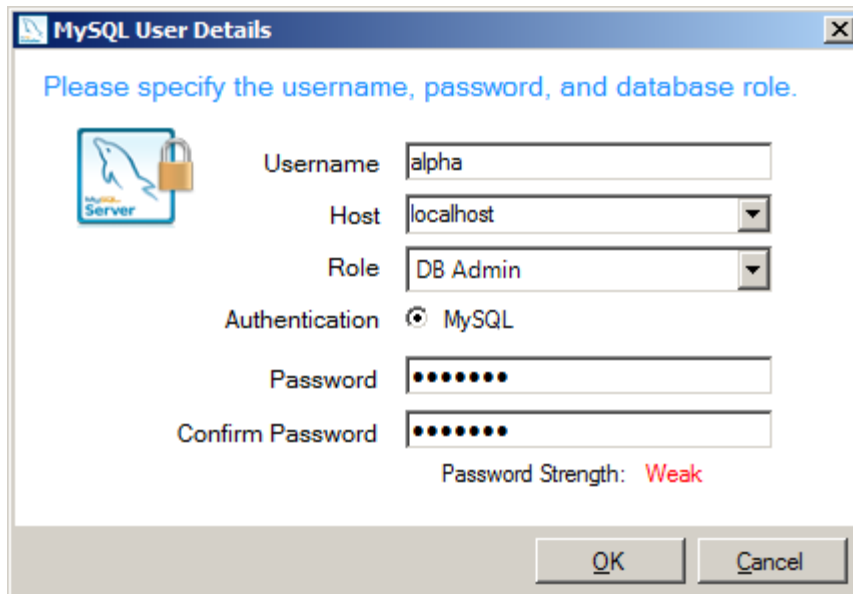
Select the default *Standalone* option and click *Next* to continue.



Select the default options and click *Next*.




Now set a root password and keep it safe. You will need it to administer the database. Now click *Add User* to create a database user.



MySQL User Details

Please specify the username, password, and database role.

 Username:

Host:

Role:

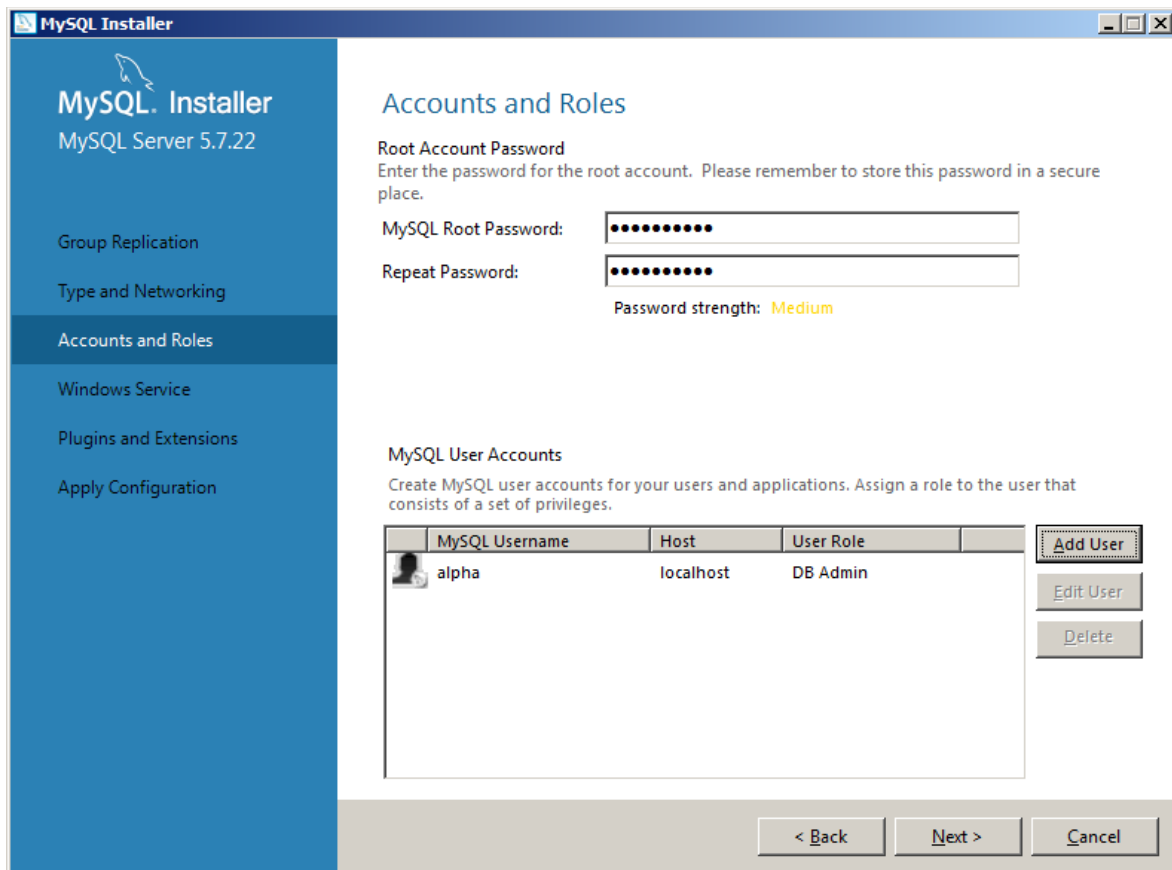
Authentication: MySQL

Password:

Confirm Password:

Password Strength: **Weak**

Create the new database user and set the Host to localhost.



MySQL Installer
MySQL Server 5.7.22

- Group Replication
- Type and Networking
- Accounts and Roles**
- Windows Service
- Plugins and Extensions
- Apply Configuration

Accounts and Roles


Root Account Password
Enter the password for the root account. Please remember to store this password in a secure place.

MySQL Root Password:

Repeat Password:

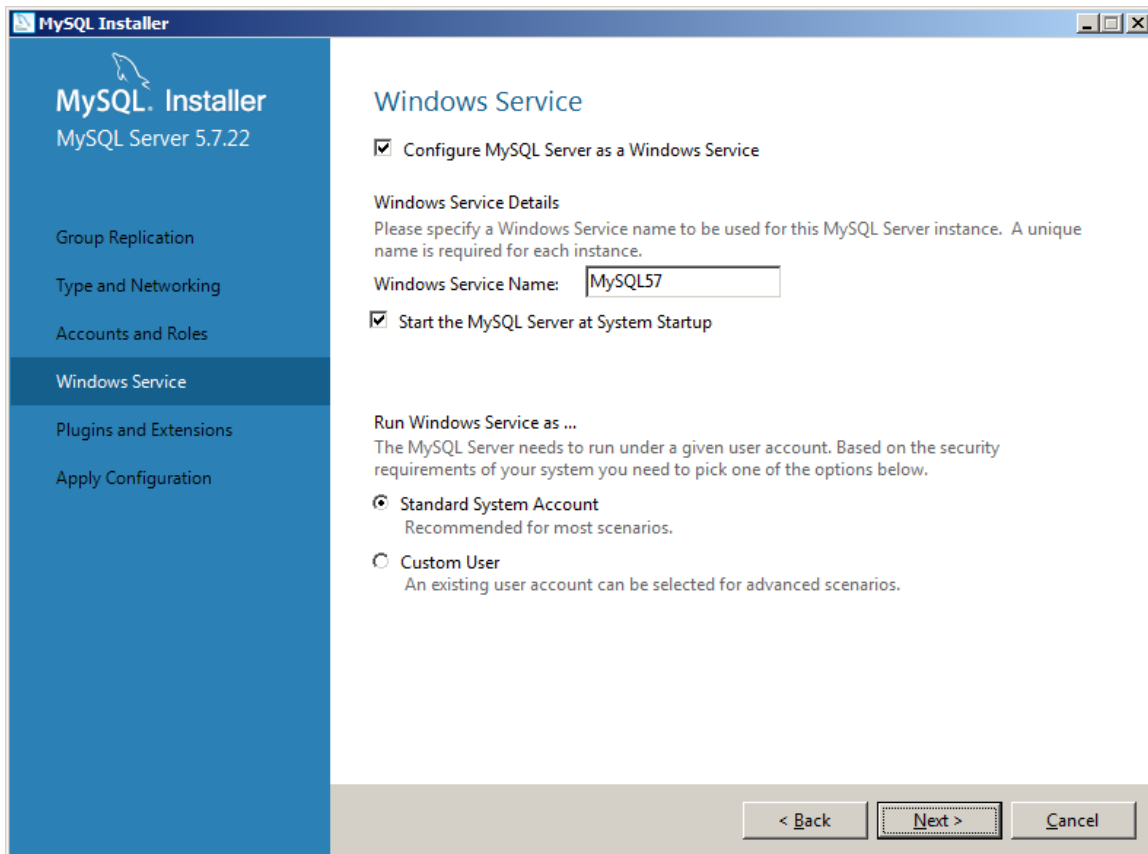
Password strength: **Medium**

MySQL User Accounts
Create MySQL user accounts for your users and applications. Assign a role to the user that consists of a set of privileges.

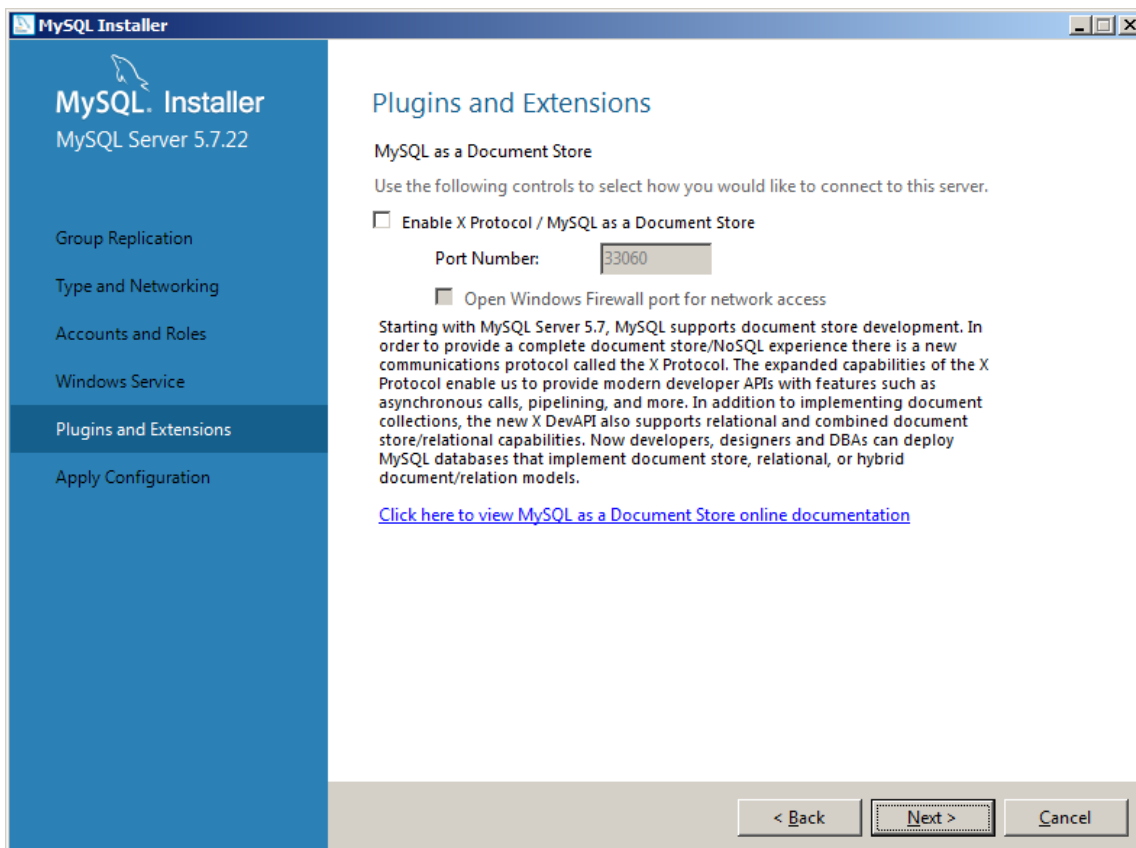
MySQL Username	Host	User Role	
 alpha	localhost	DB Admin	<input type="button" value="Add User"/> <input type="button" value="Edit User"/> <input type="button" value="Delete"/>

< Back Next > Cancel

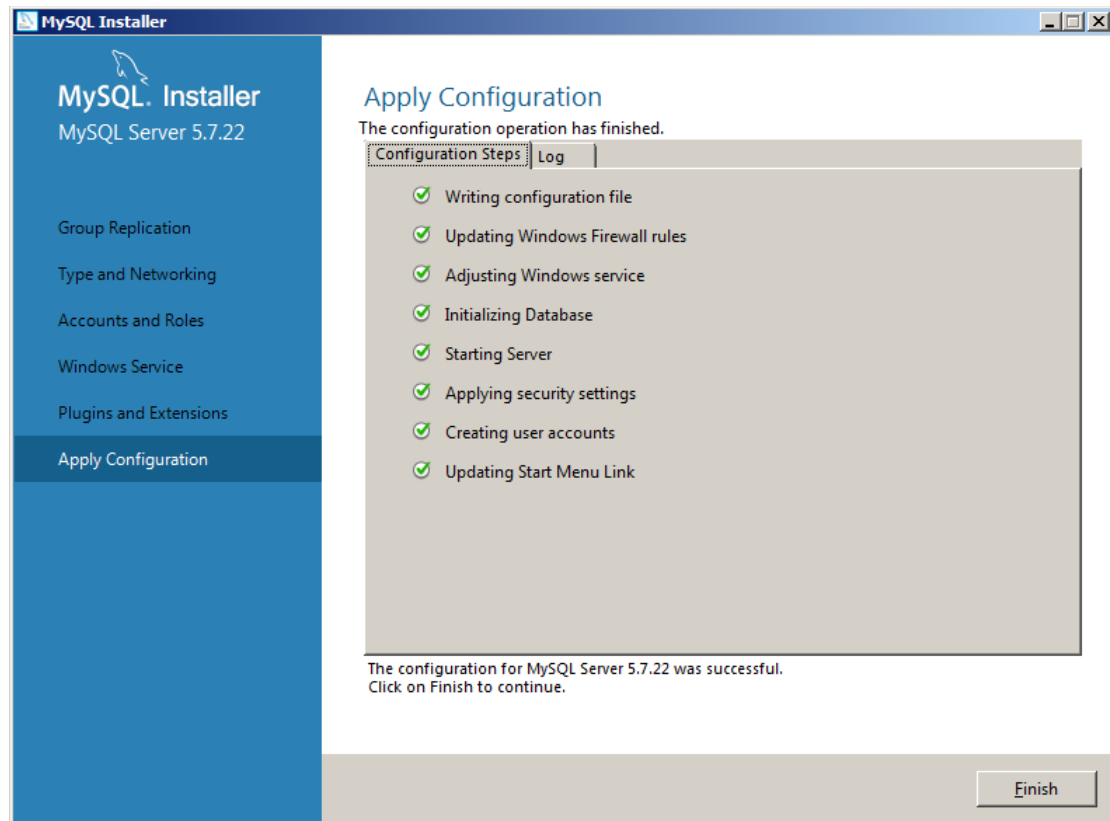
Click *Next*.



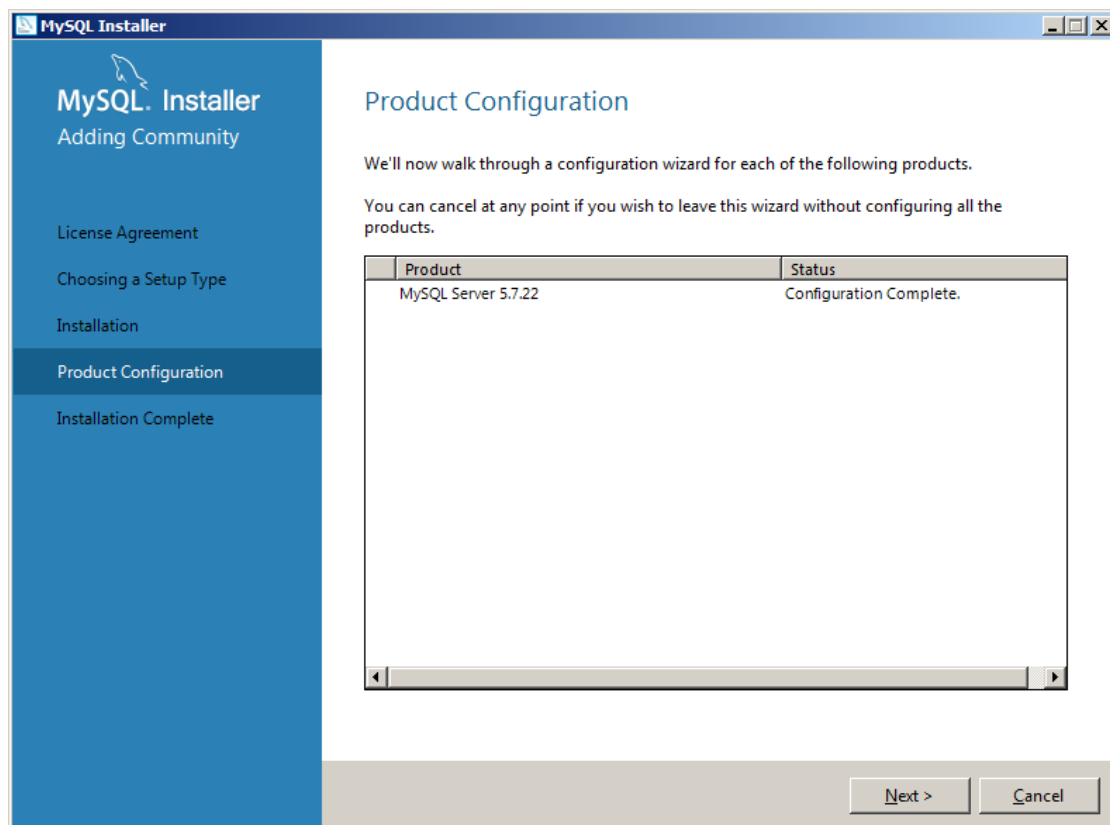
Select the default options and click *Next*.



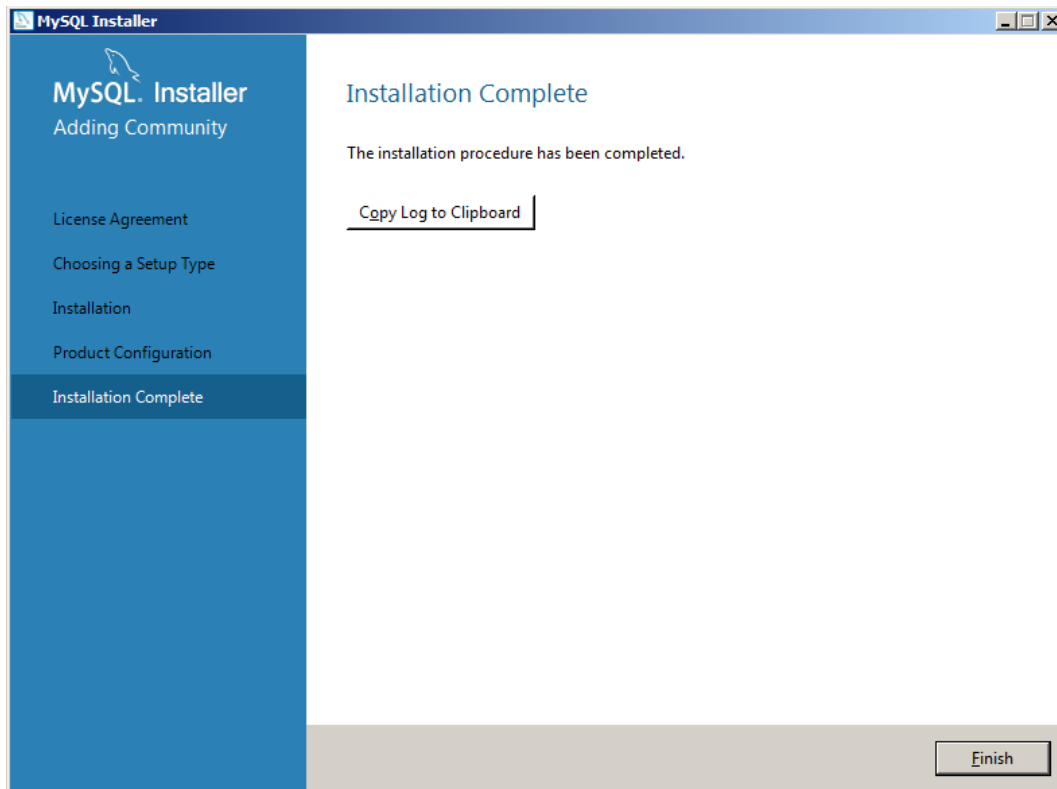
Select the default options and click *Next*.



The installer will now apply the configuration setting to the database. When the configuration is completed, click *Finish*.



Click *Next* to begin Product configuration.



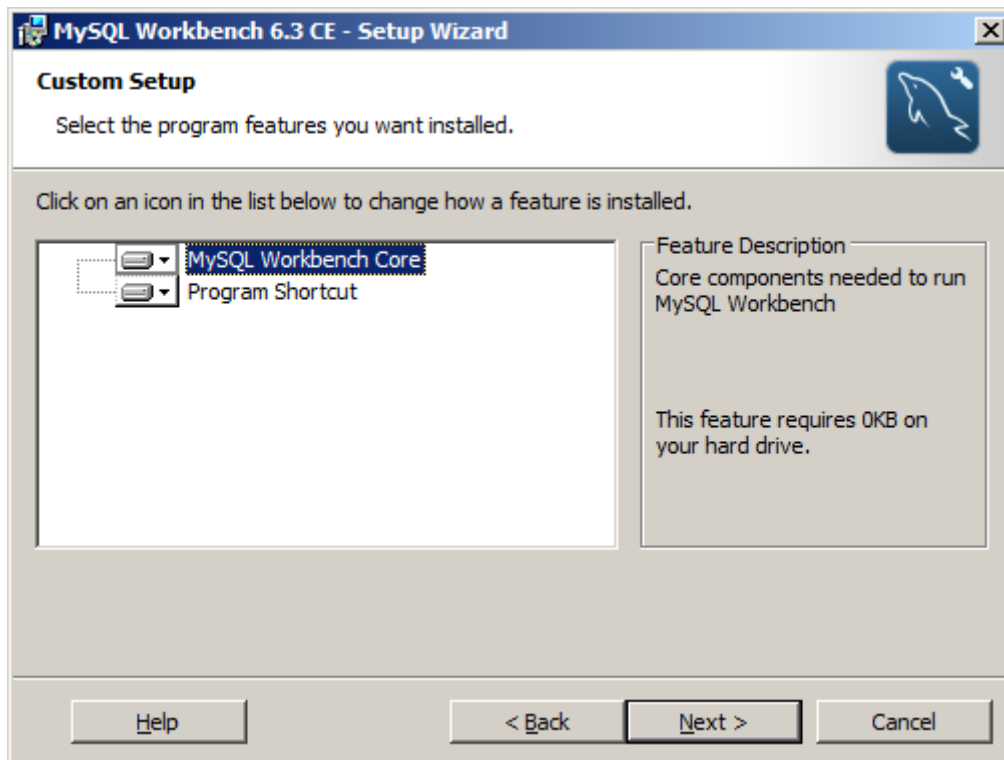
Installing MySQL Workbench

Navigate to the downloaded MySQL Workbench software, typically *mysql-workbench-community-6.3.8-win32.exe*, and run it.

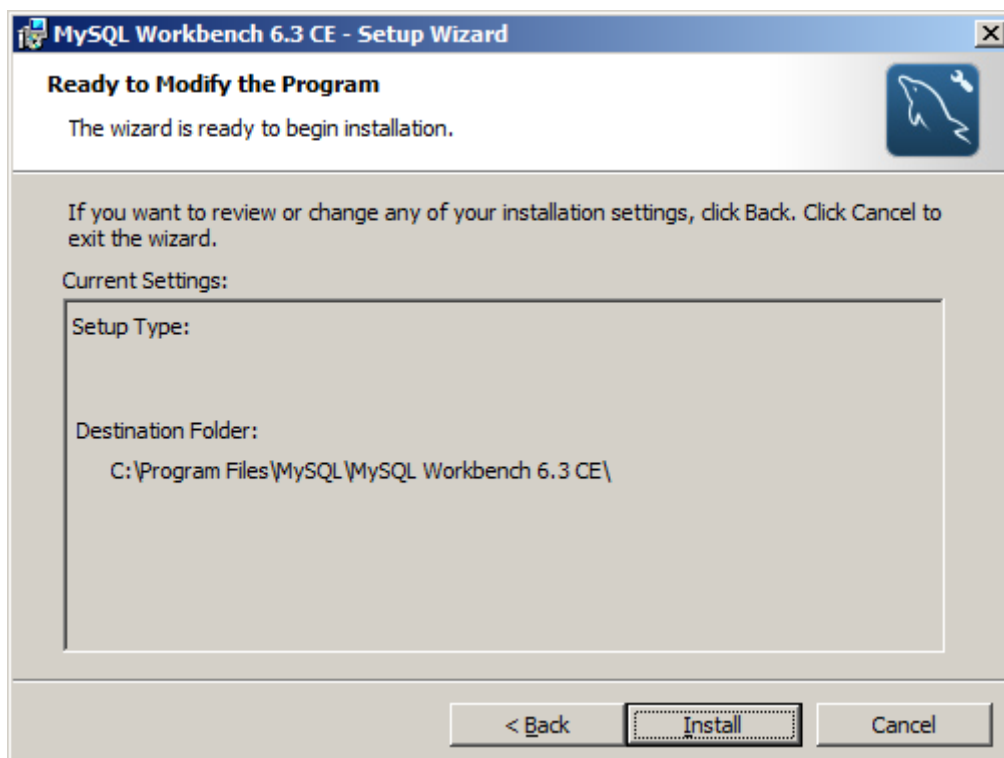


Click *Next*.

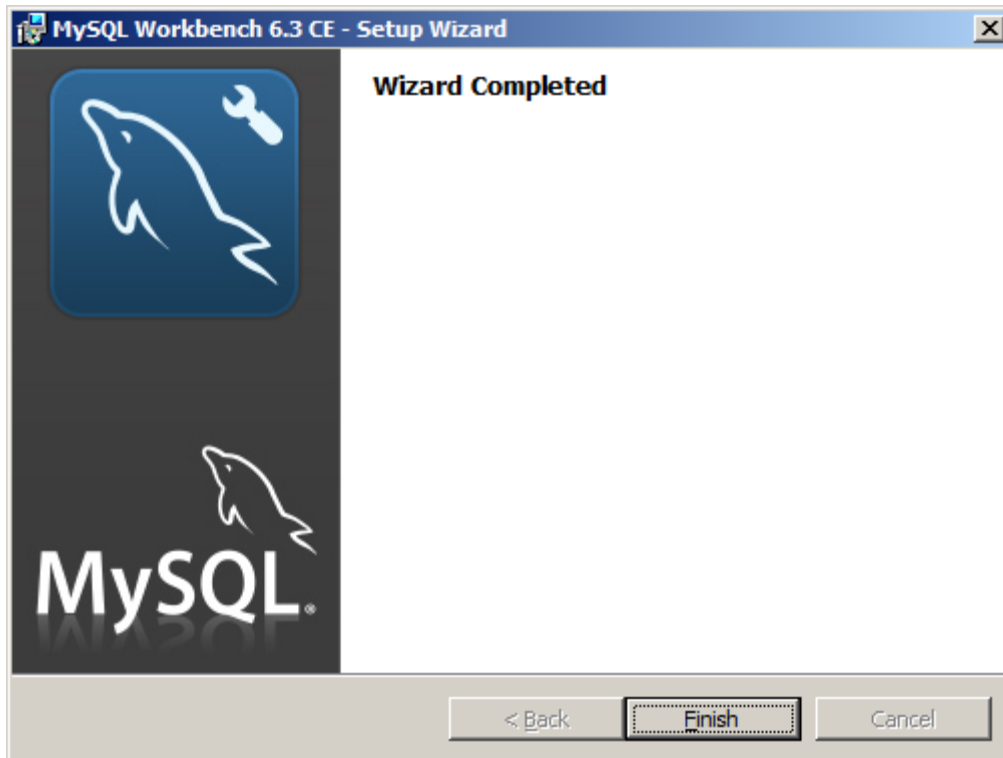
Select the *Add* option and click *Next*.



Click *Next*.

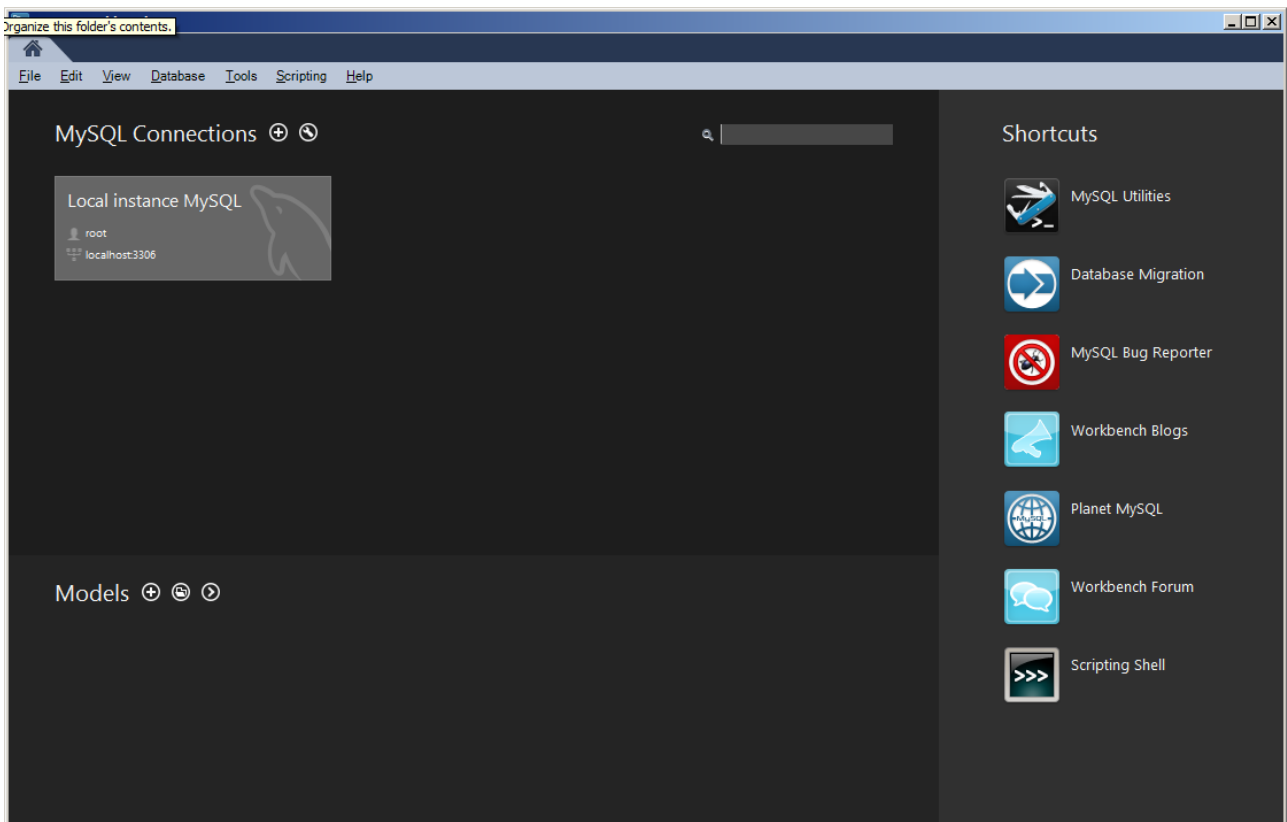


Click *Install*. The installation will only take a few moments then the **Completed** screen will be displayed.



Creating and Populating the Harvester Database

Open the MySQL Workbench application.

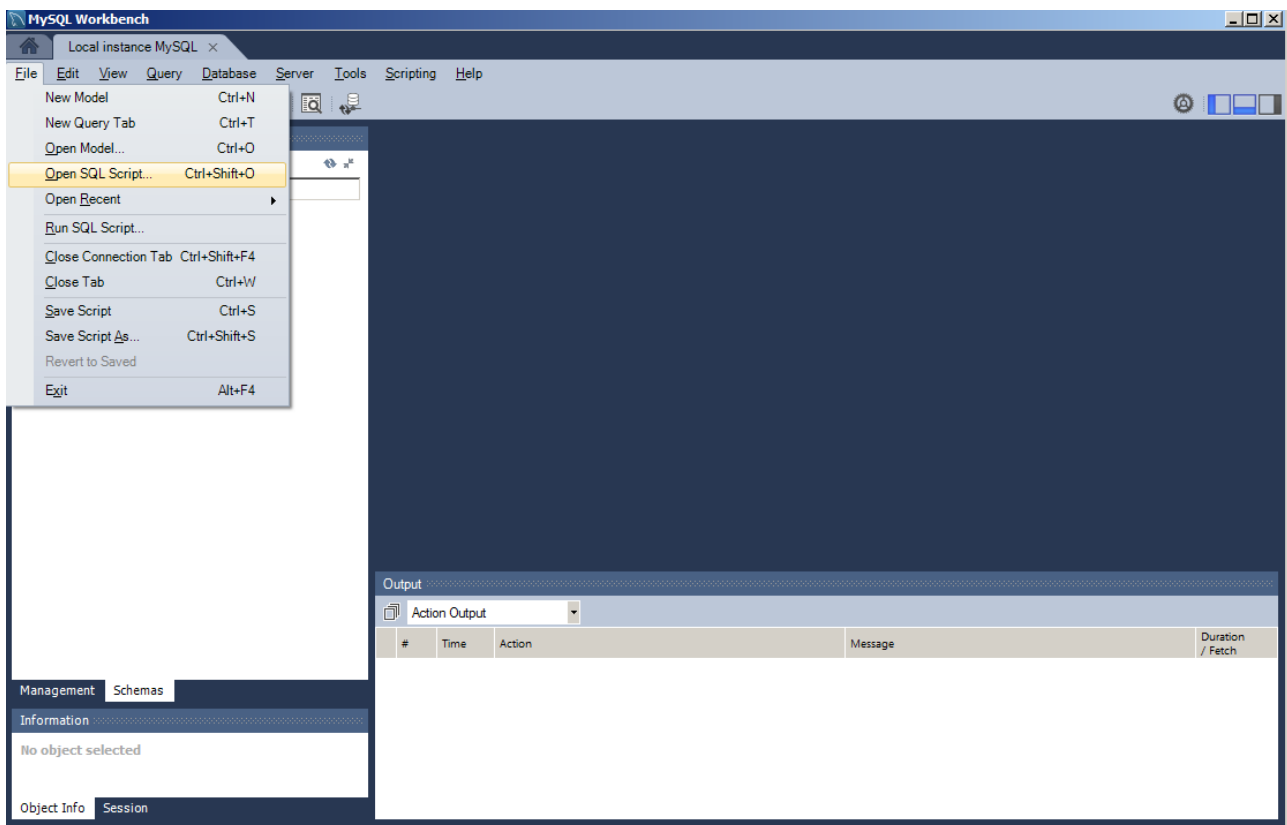


Click on the *Local Instance MySQL* box to log into the local database.



Enter the root password to that set when you were installing the database and click *Ok*.

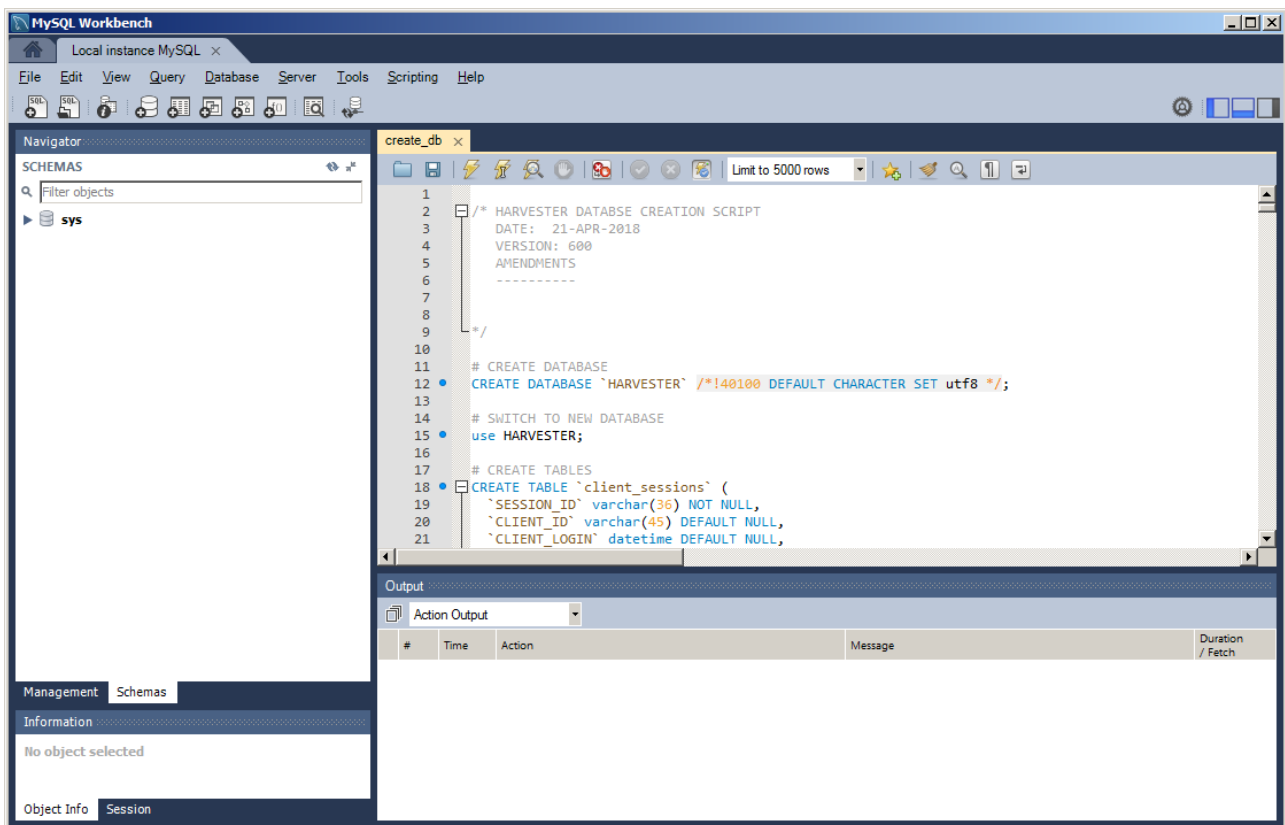
Once Workbench is open, navigate to the *Open SQL Script* in the the *File* menu.




In the file dialog box, navigate to

C:\Program Files (x86)\SIGINT Systems\Harvester\resources\setup\database

and open the *create_db.sql* file.



Once the file is open, click the *Execute* icon  on the toolbar.

This will create the new HARVESTER database. Next open and execute the *populate_db.sql* file. This will build all the narrative tables that HARVESTER requires to run.

Once this is done, the MySQL has been successfully installed and the HARVESTER has been successfully created.

You can now run HARVESTER for the first time!