

Installing MySQL 8

This is a step by step guide for installing the MySQL database and MySQL Workbench, and the creation and population of the HARVESTER database.

CONTENTS

Downloading Software.....	1
Installing the MySQL Database Software.....	1
Installing MySQL Workbench.....	13
Creating and populating the Harvester Database.....	15

Downloading Software

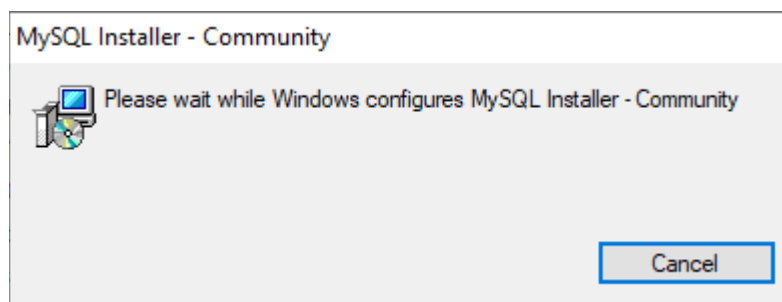
All application software can be downloaded from the MySQL website. There are two applications that are required:

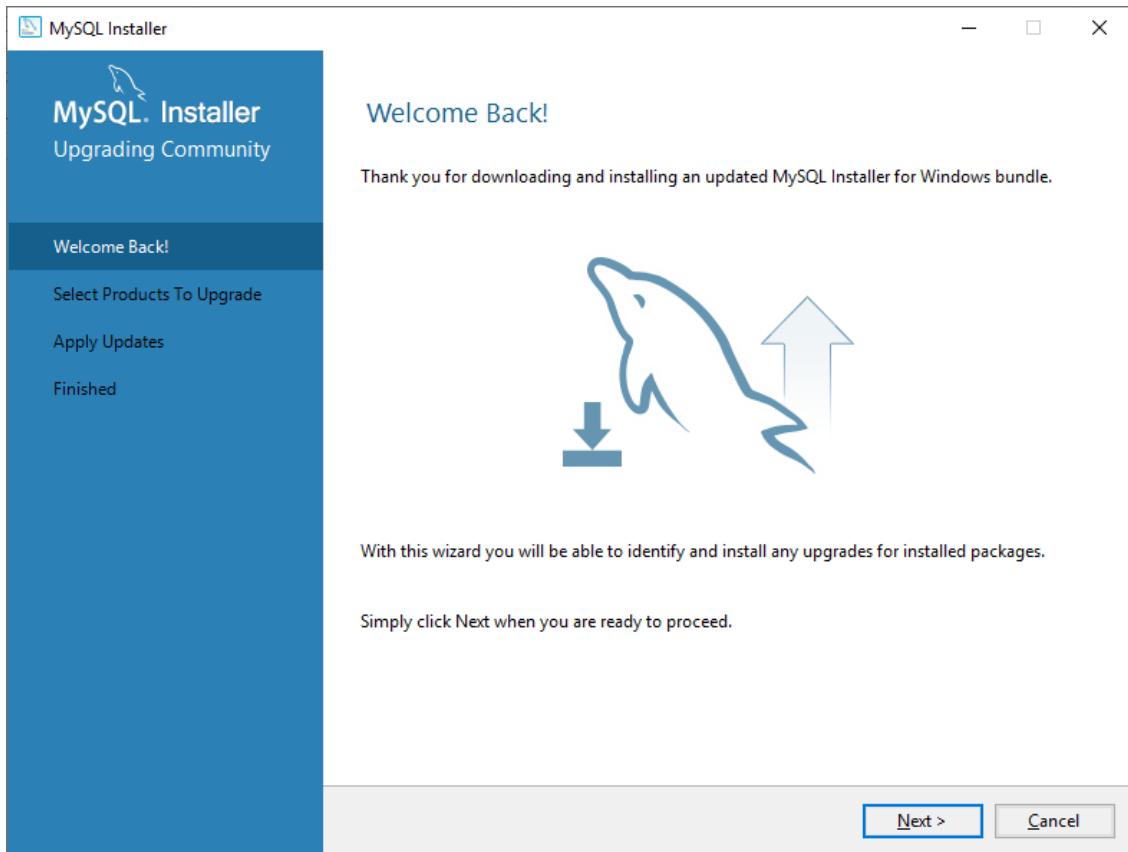
MySQL 8 Database <https://dev.mysql.com/downloads/mysql>

MSQL Workbench <https://dev.mysql.com/downloads/workbench/>

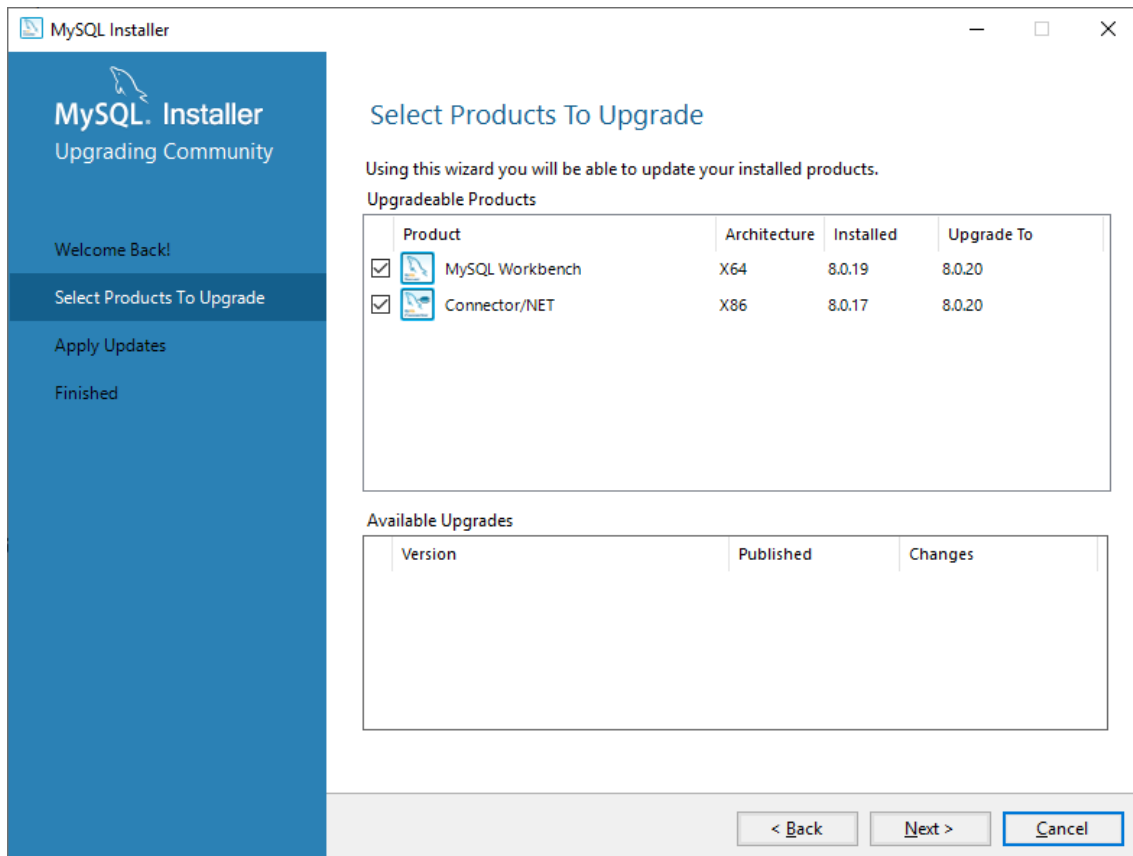
Installing the MySQL Database Software

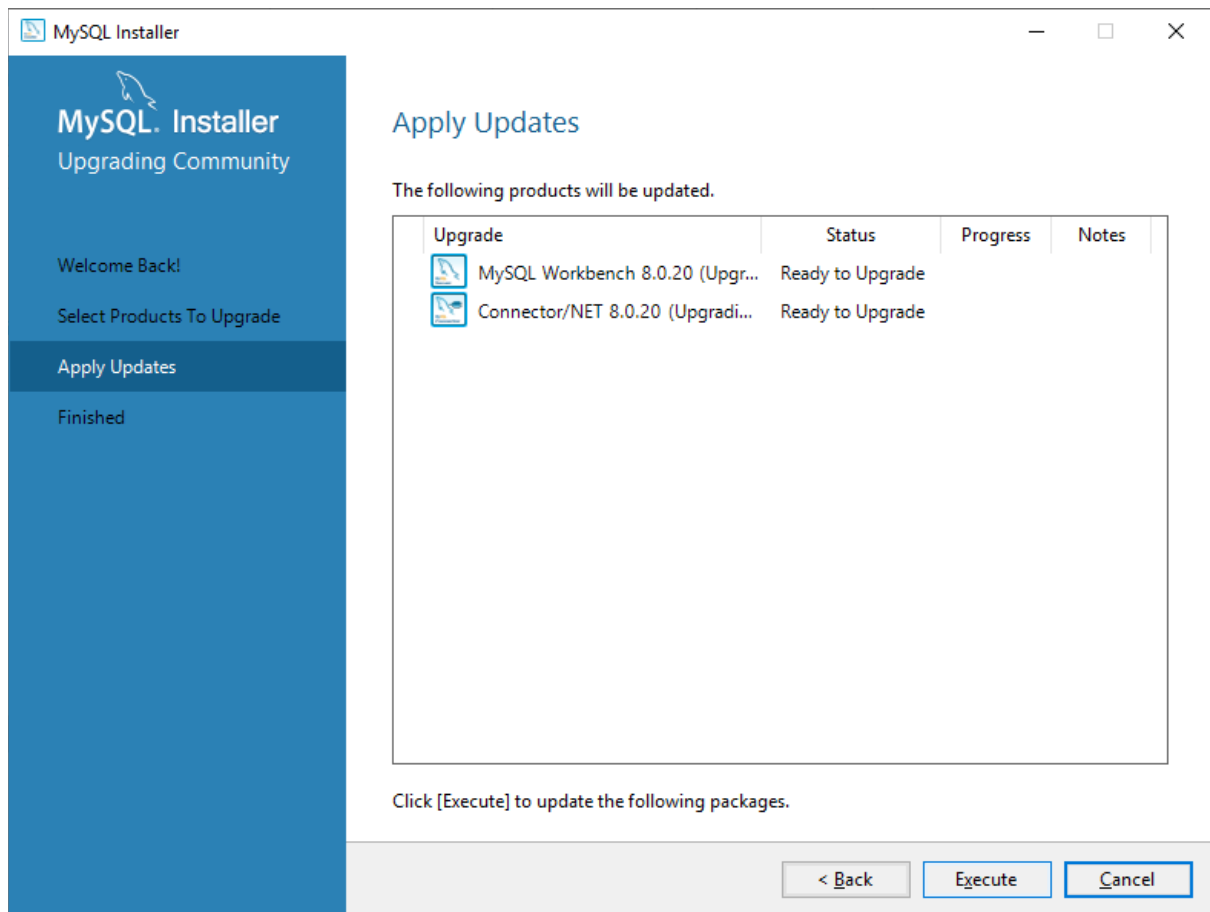
Navigate to the downloaded MySQL database installation application, typically *mysql-installer-community-8.0.20.0.msi*, and run it.



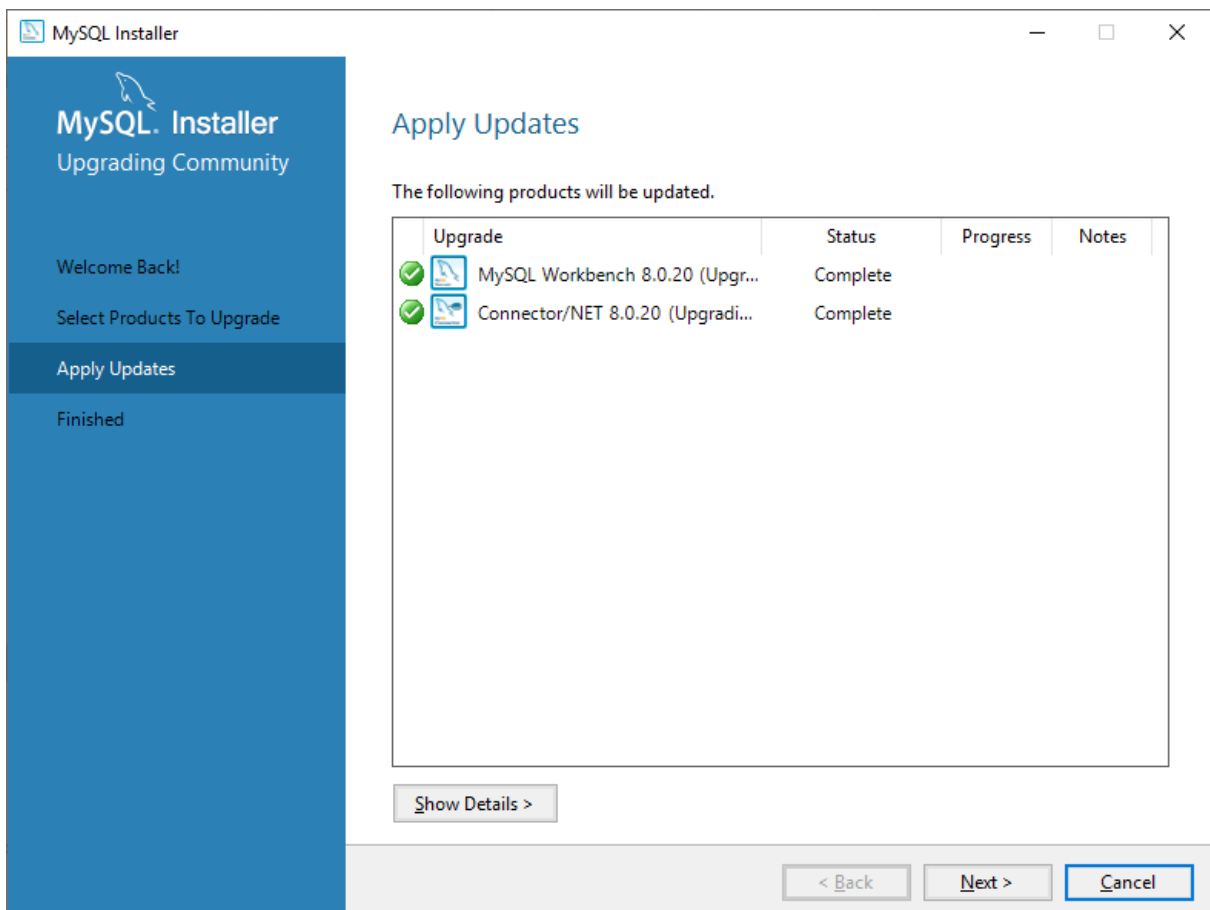


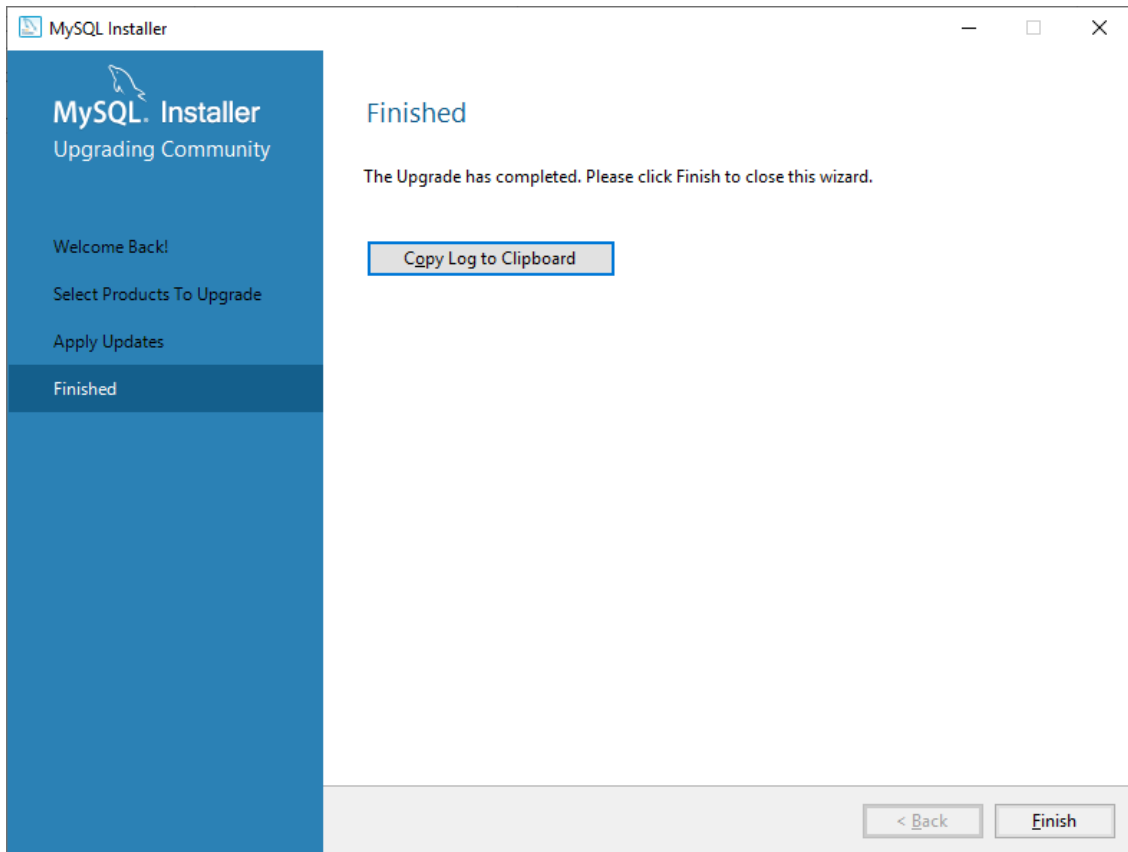
If you already have MySQL Server installed, the Installer will first upgrade any installed components to the largest version.



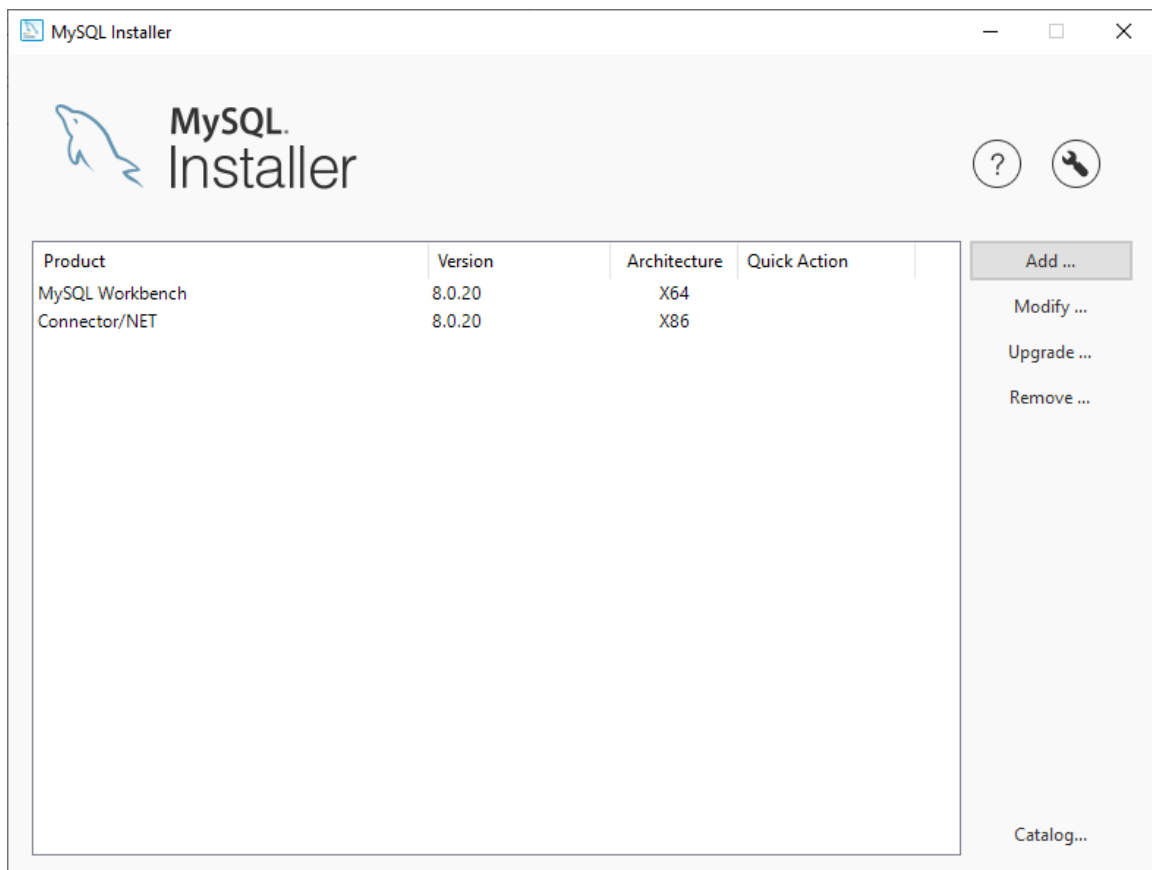


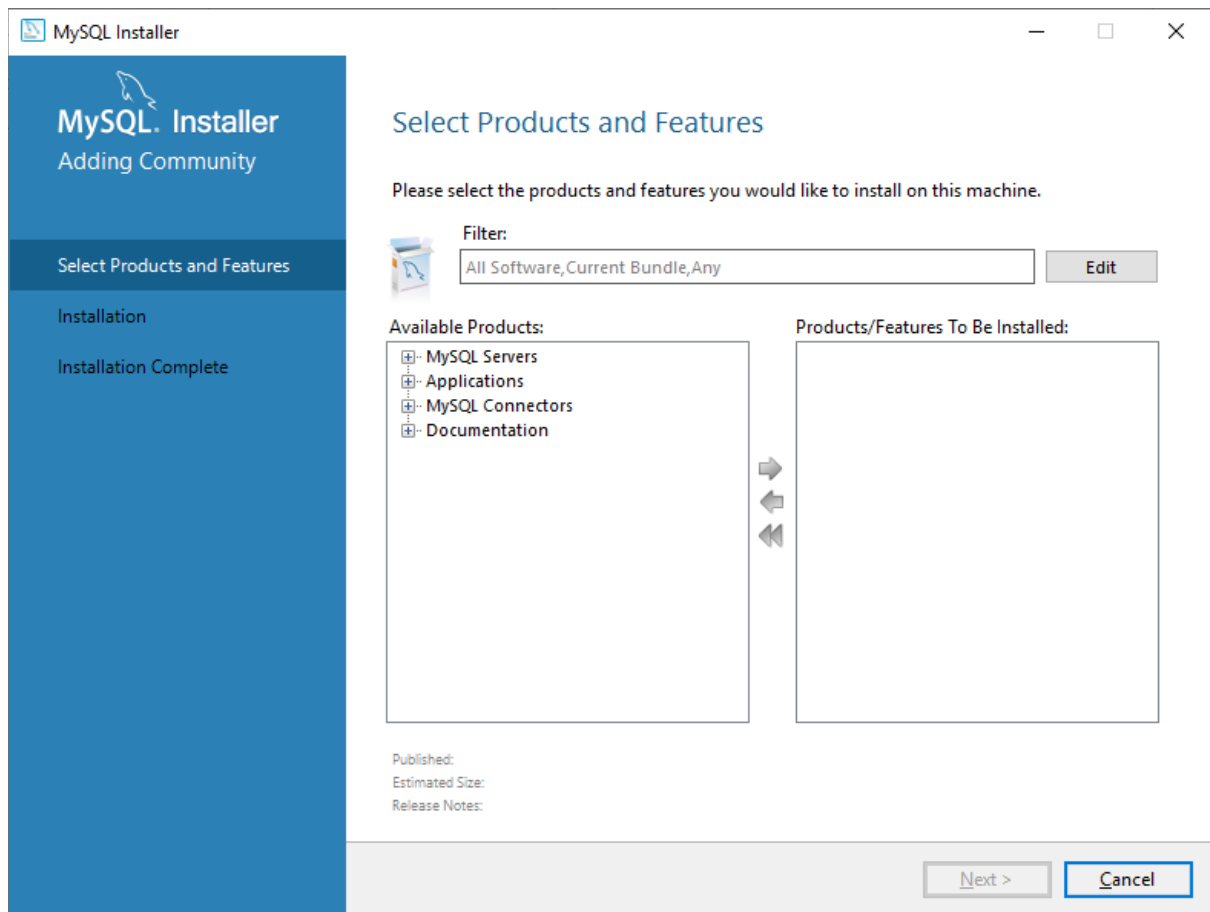
Select the components to upgrade and click the *Execute* button.



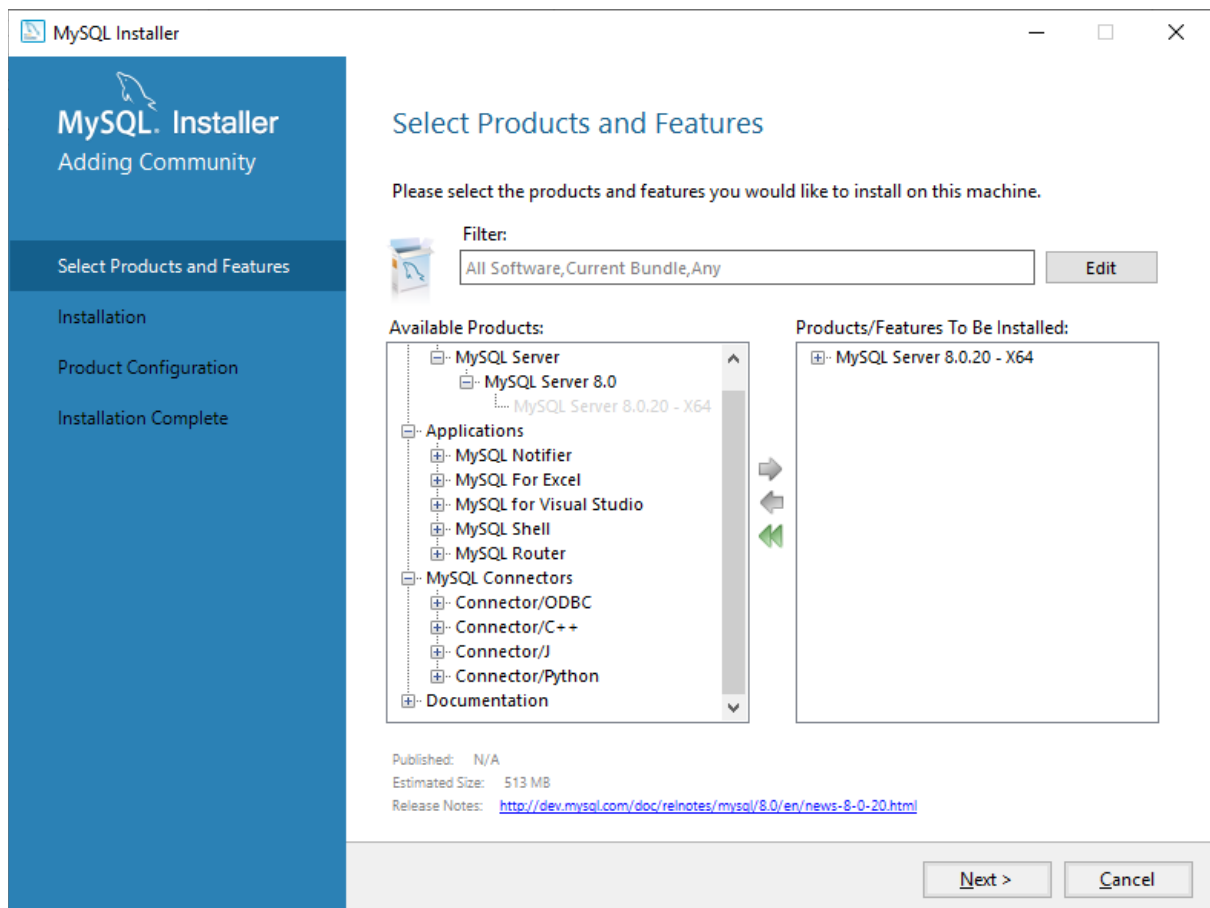


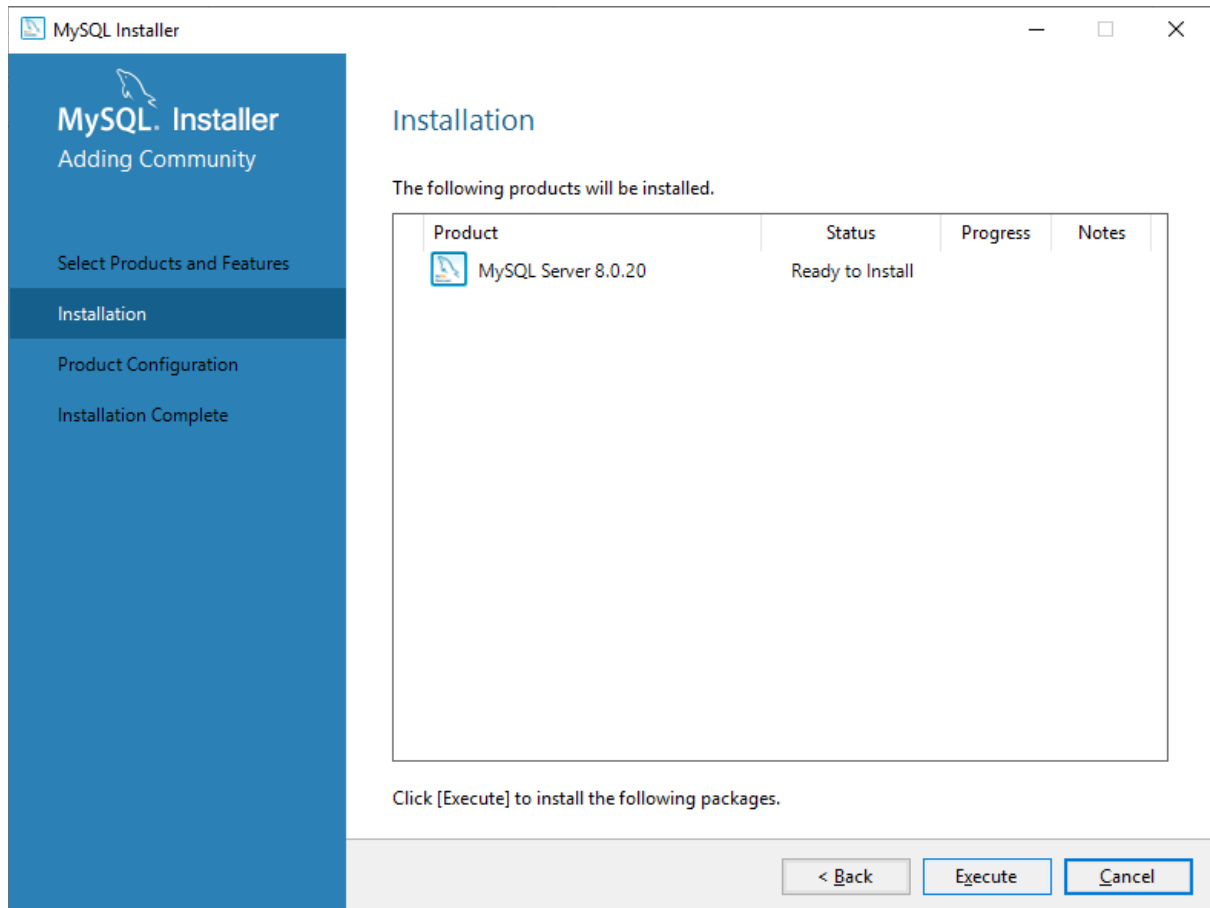
With installed components now upgraded, the database installation can begin. Click the *Add* button.



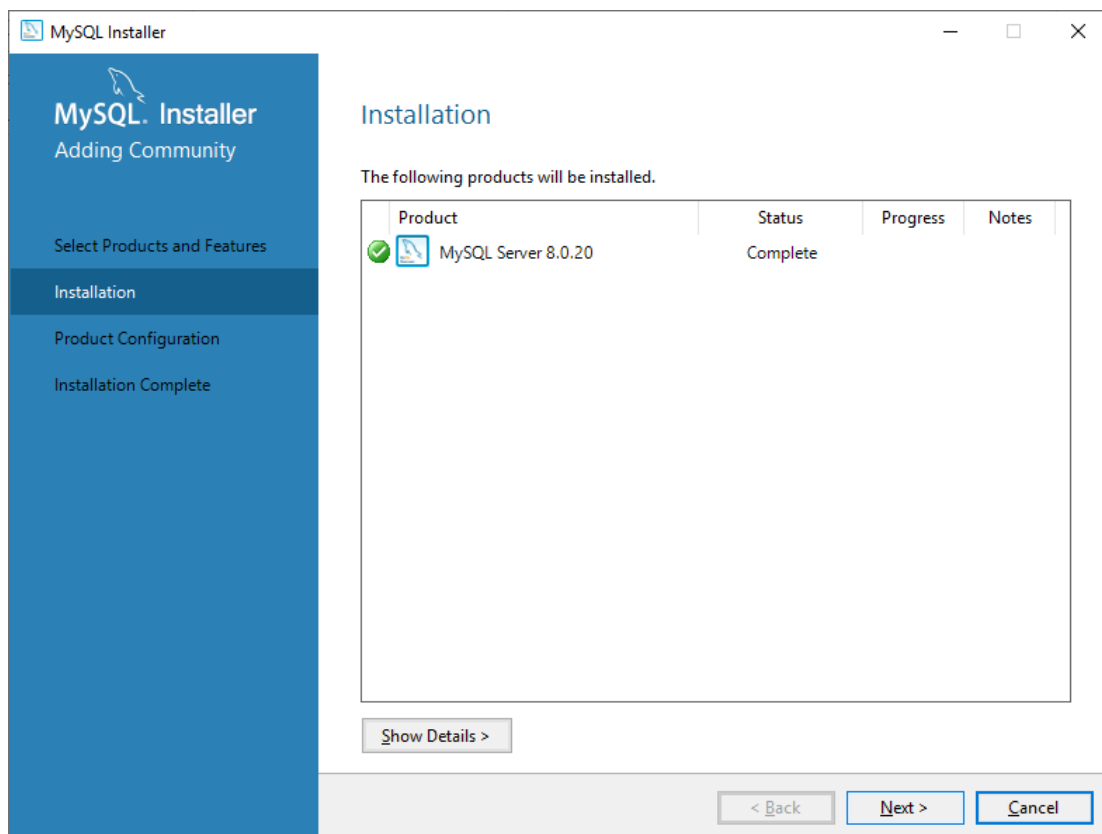


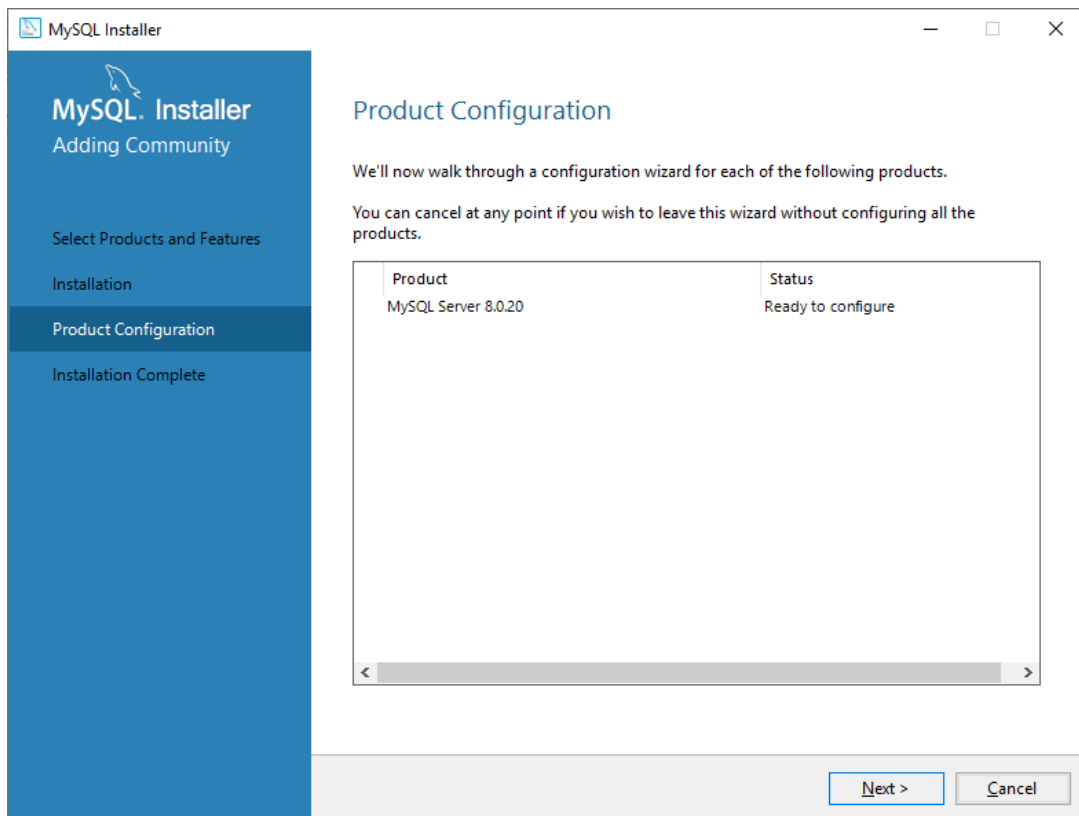
Open the list of Available Products and select MySQL Server 8.0 to be installed then click the *Next* button.



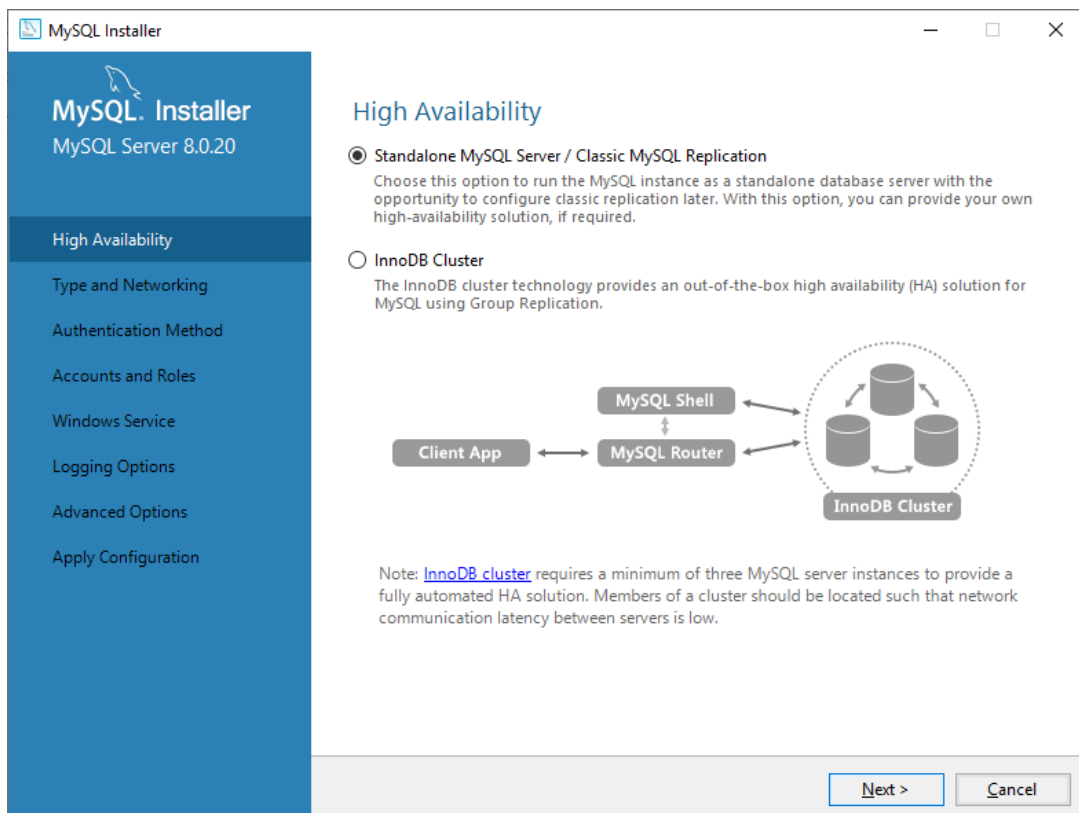


Click the *Execute* button to begin the installation process.

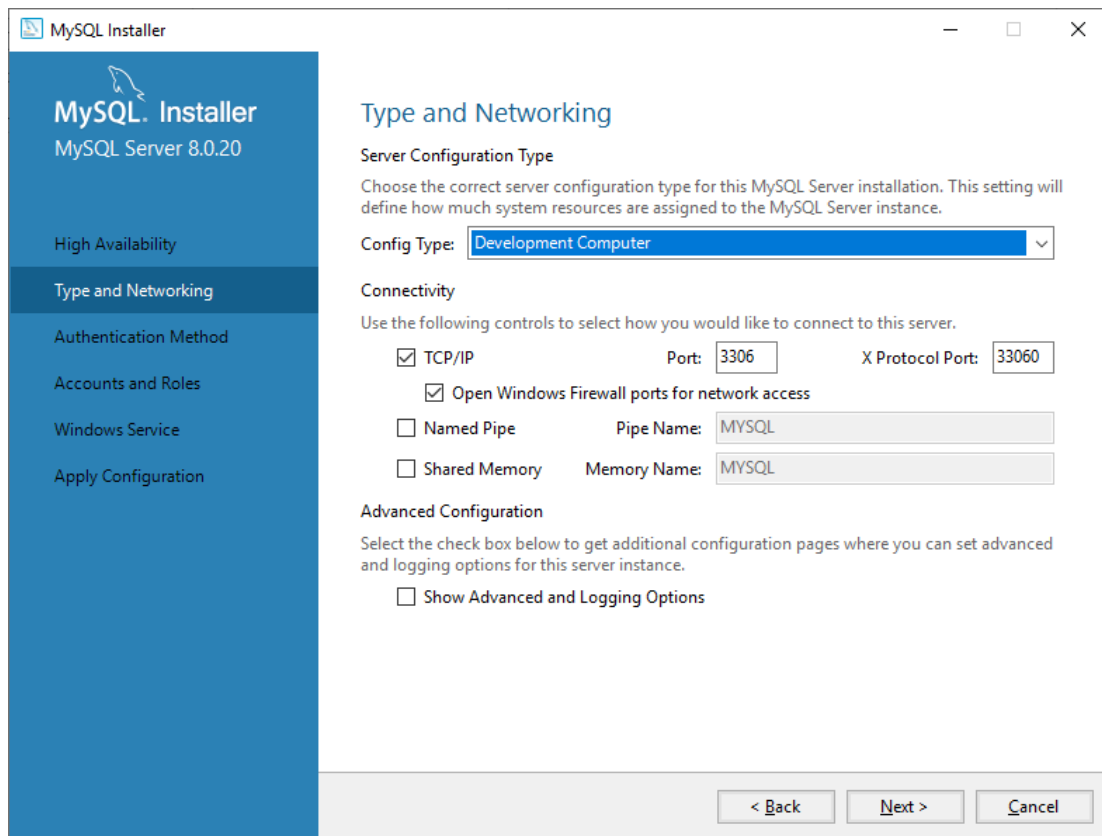




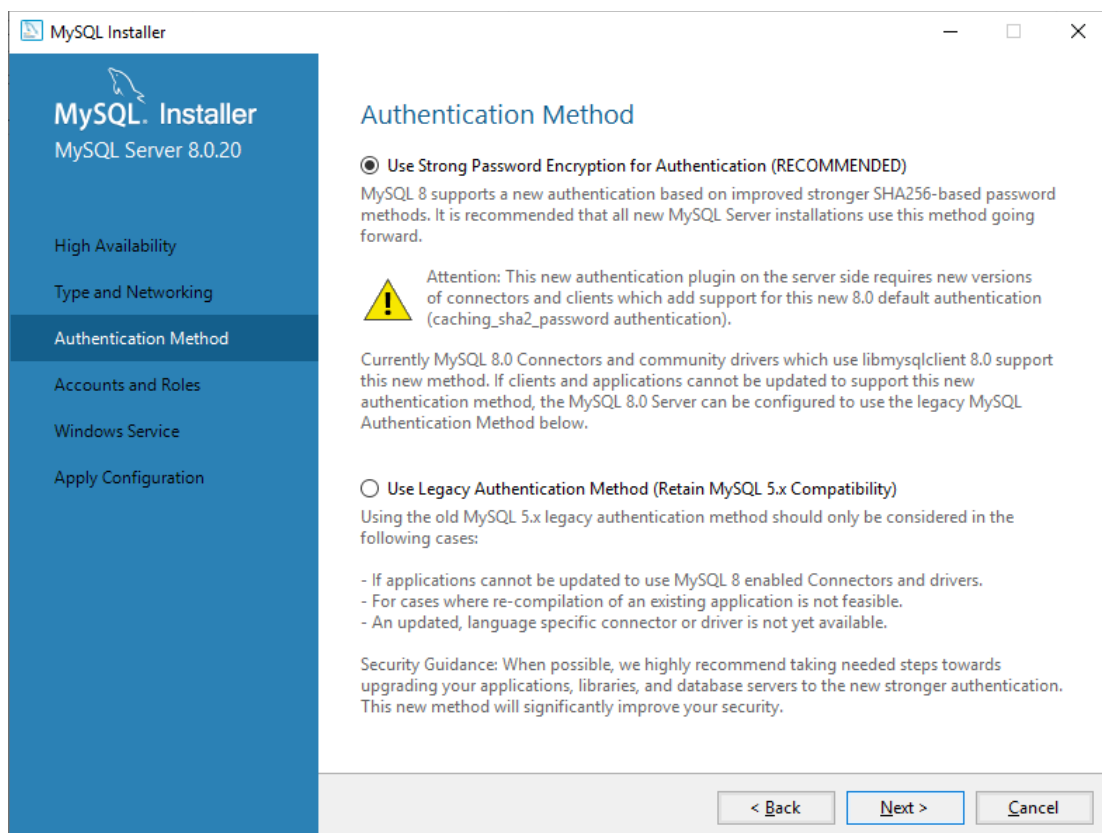
Once successfully installed, the database will now have to be configured.



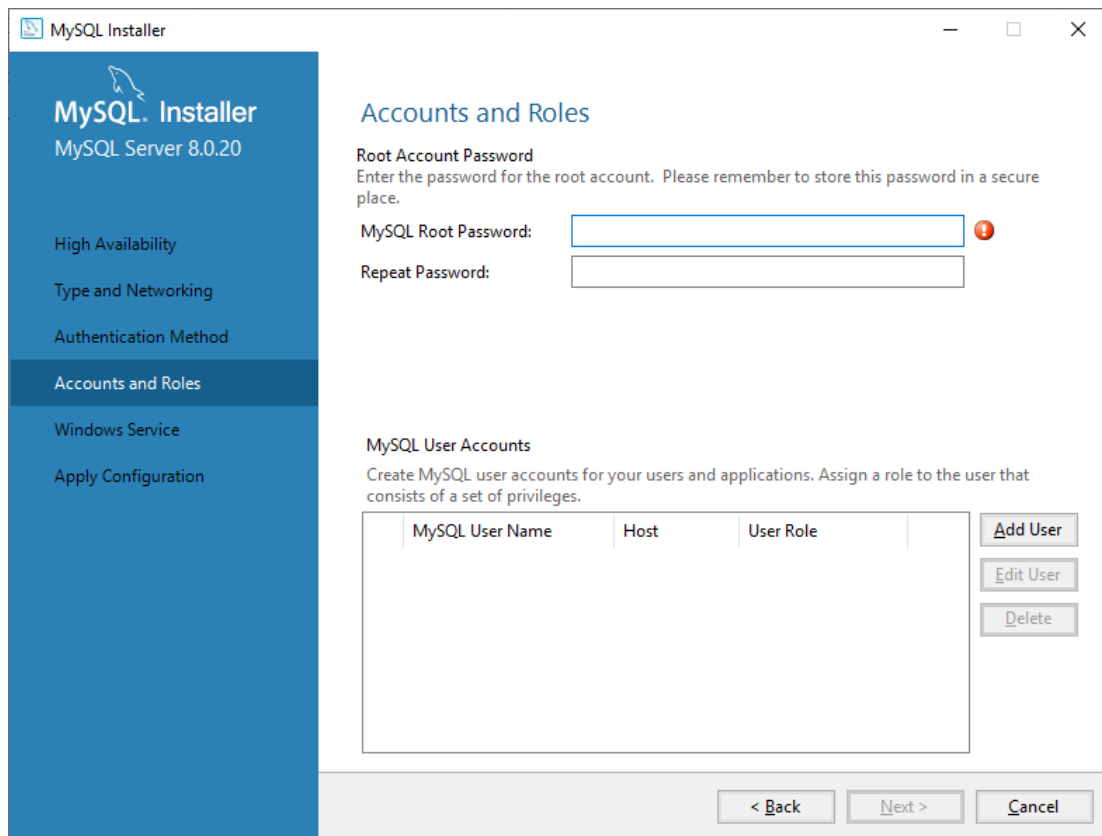
Select the default *Standalone* option and click *Next* to continue



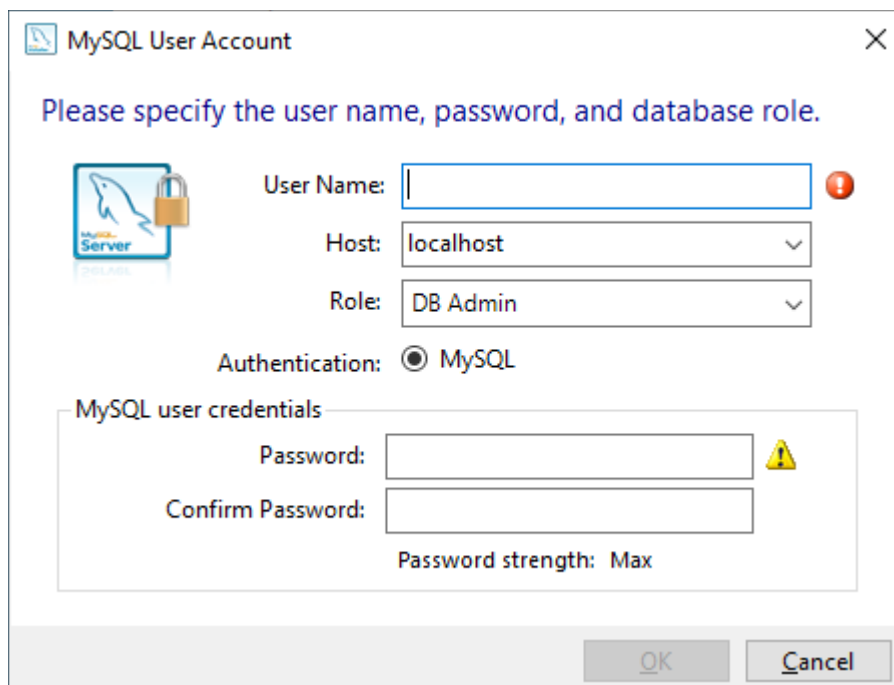
In most cases, the default options are acceptable however you may have specific networking requirements. Choose the options you require and click the *Next* button.



We strongly recommend that you use Strong Password Encryption.



Now set a root password and keep it safe. You will need it to administer the database. Now click *Add User* to create a database user.



Create the new database user and set the Host to localhost.

MySQL Installer

MySQL Server 8.0.20

High Availability

Type and Networking

Authentication Method

Accounts and Roles

Windows Service

Apply Configuration

Accounts and Roles

Root Account Password
Enter the password for the root account. Please remember to store this password in a secure place.

MySQL Root Password:

Repeat Password:

Password strength: **Strong**

MySQL User Accounts
Create MySQL user accounts for your users and applications. Assign a role to the user that consists of a set of privileges.

MySQL User Name	Host	User Role
alpha	localhost	DB Admin

Add User

Edit User

Delete

< Back Next > Cancel

Once new accounts are created, click *Next*.

MySQL Installer

MySQL Server 8.0.20

High Availability

Type and Networking

Authentication Method

Accounts and Roles

Windows Service

Apply Configuration

Windows Service

Configure MySQL Server as a Windows Service

Windows Service Details
Please specify a Windows Service name to be used for this MySQL Server instance. A unique name is required for each instance.

Windows Service Name:

Start the MySQL Server at System Startup

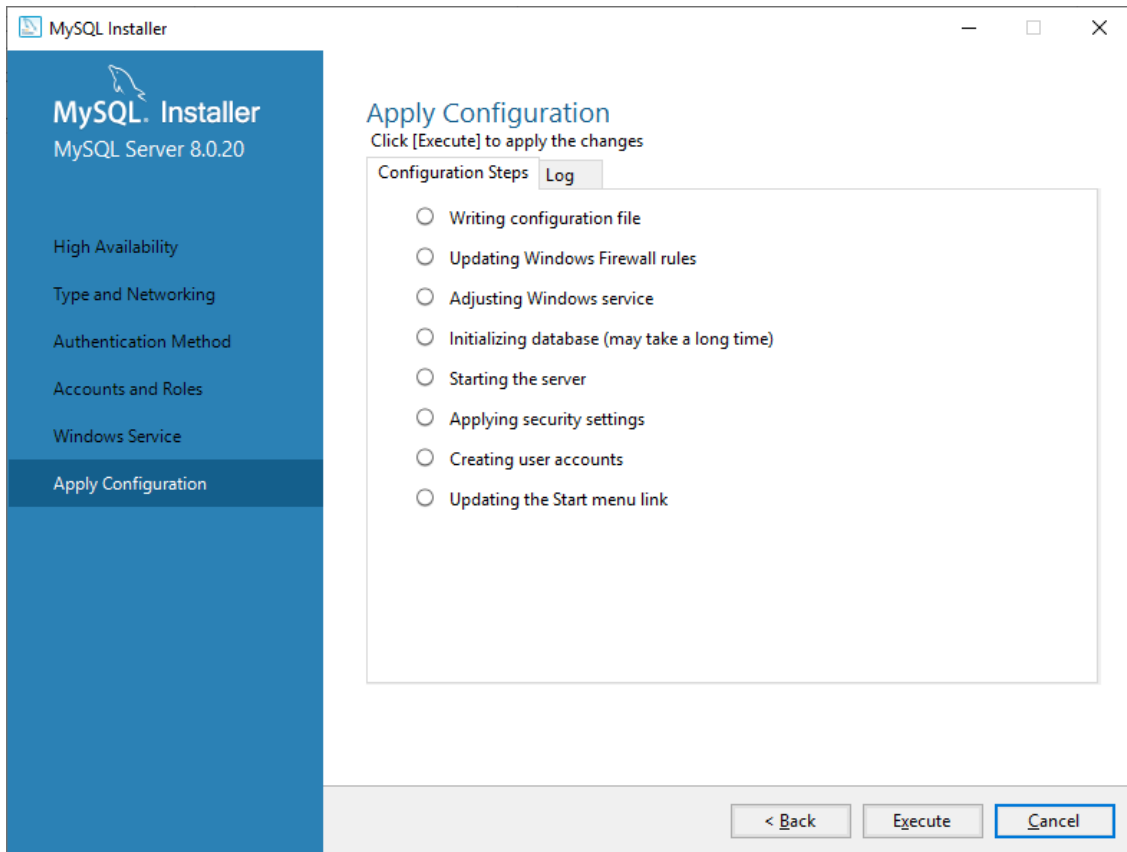
Run Windows Service as ...
The MySQL Server needs to run under a given user account. Based on the security requirements of your system you need to pick one of the options below.

Standard System Account
Recommended for most scenarios.

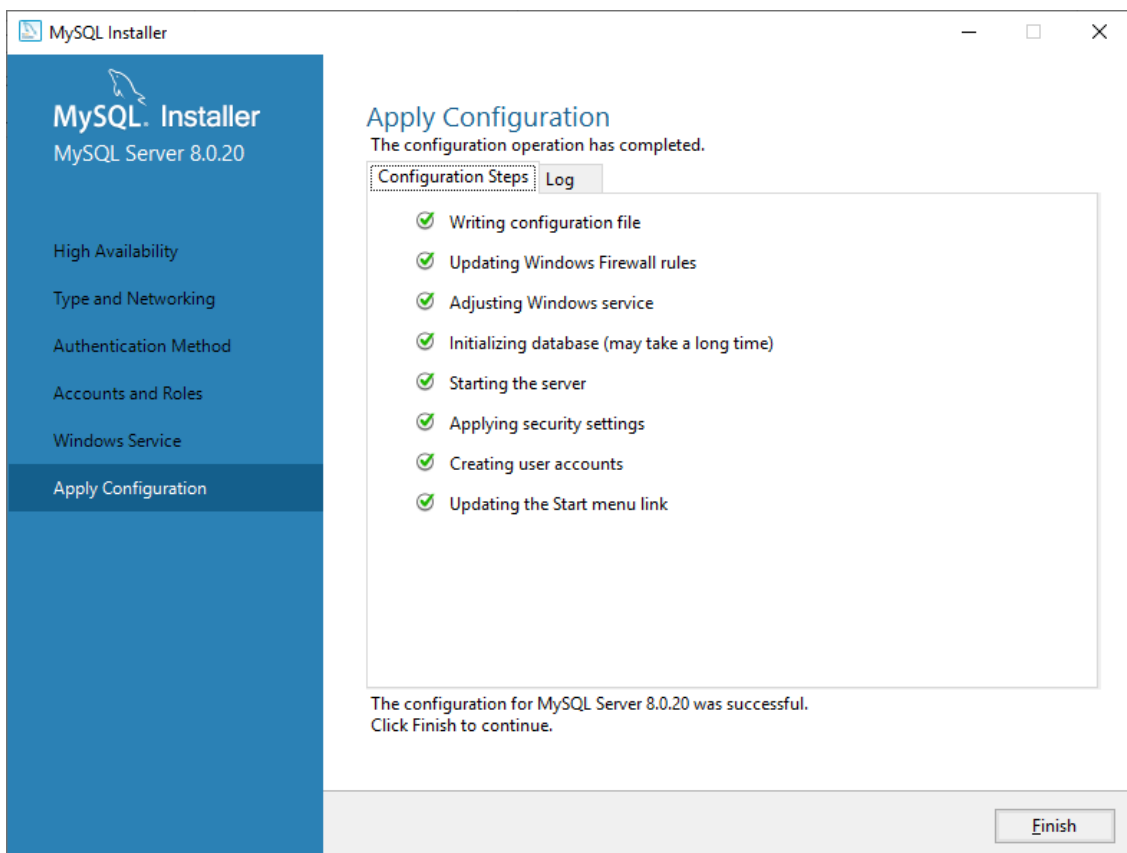
Custom User
An existing user account can be selected for advanced scenarios.

< Back Next > Cancel

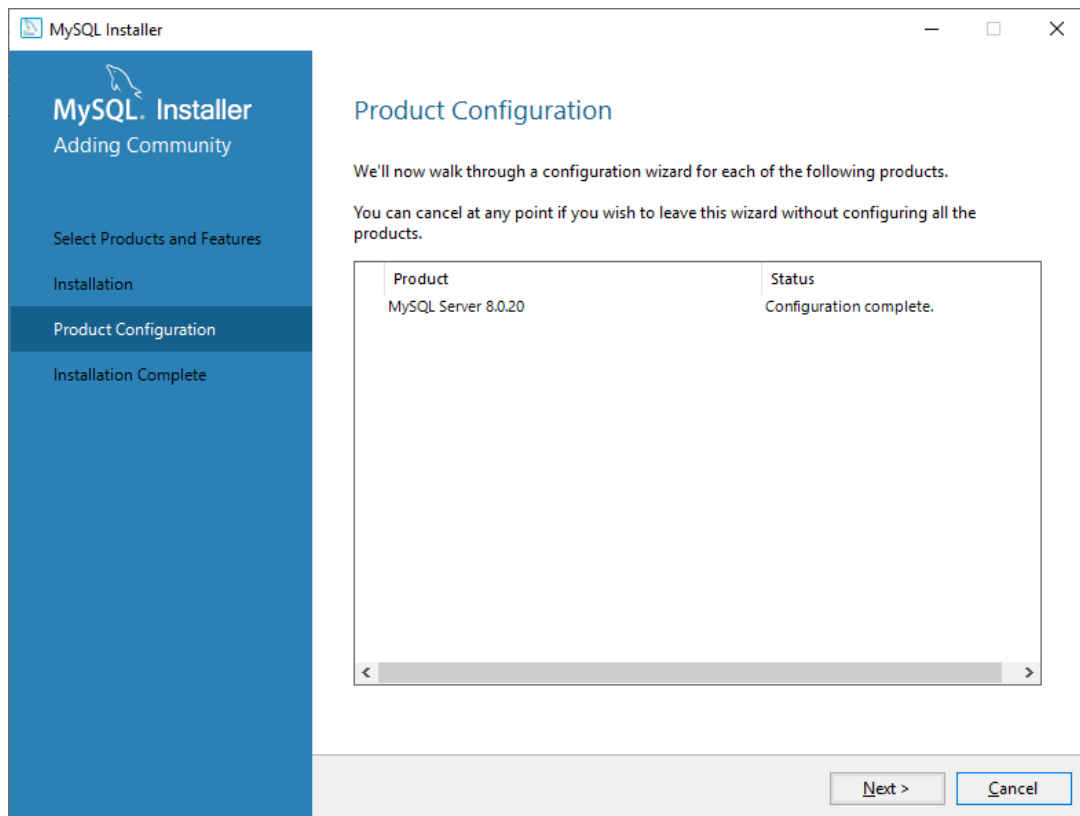
Select the default options and click *Next*.



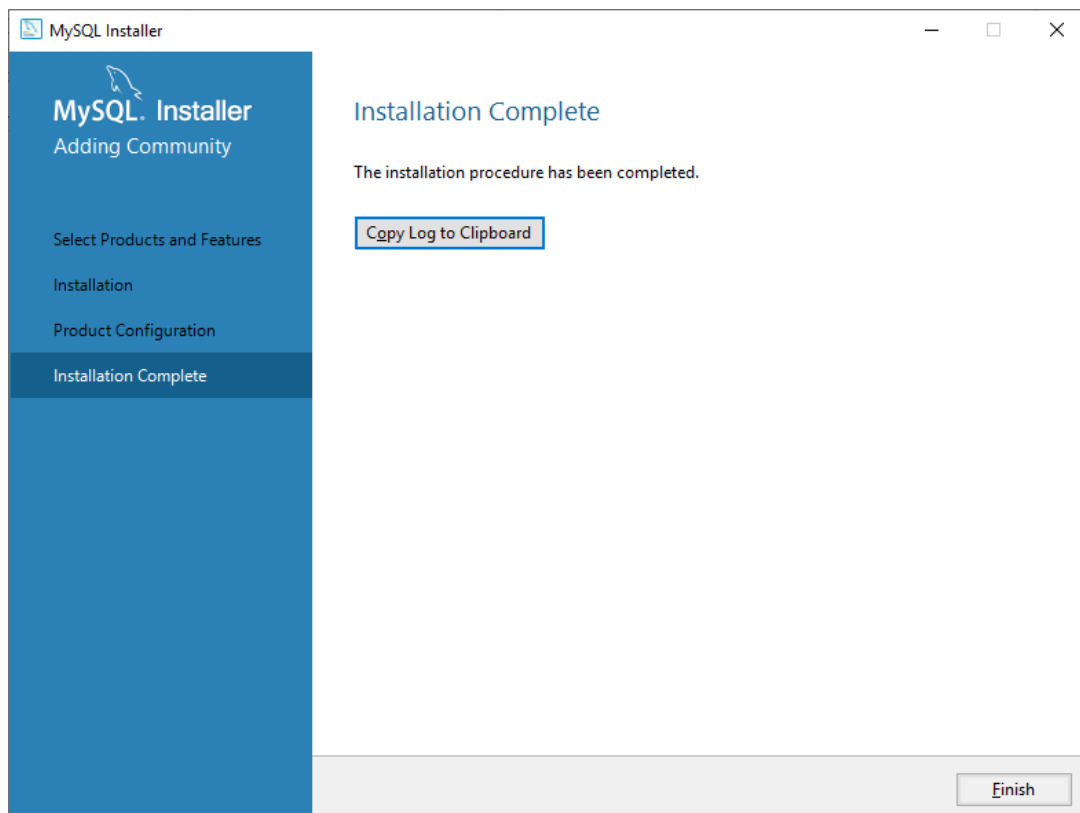
Click the *Execute* button to apply the configuration settings.



The installer will now apply the configuration setting to the database. When the configuration is completed, click *Finish*.



Click *Next* to begin Product configuration.

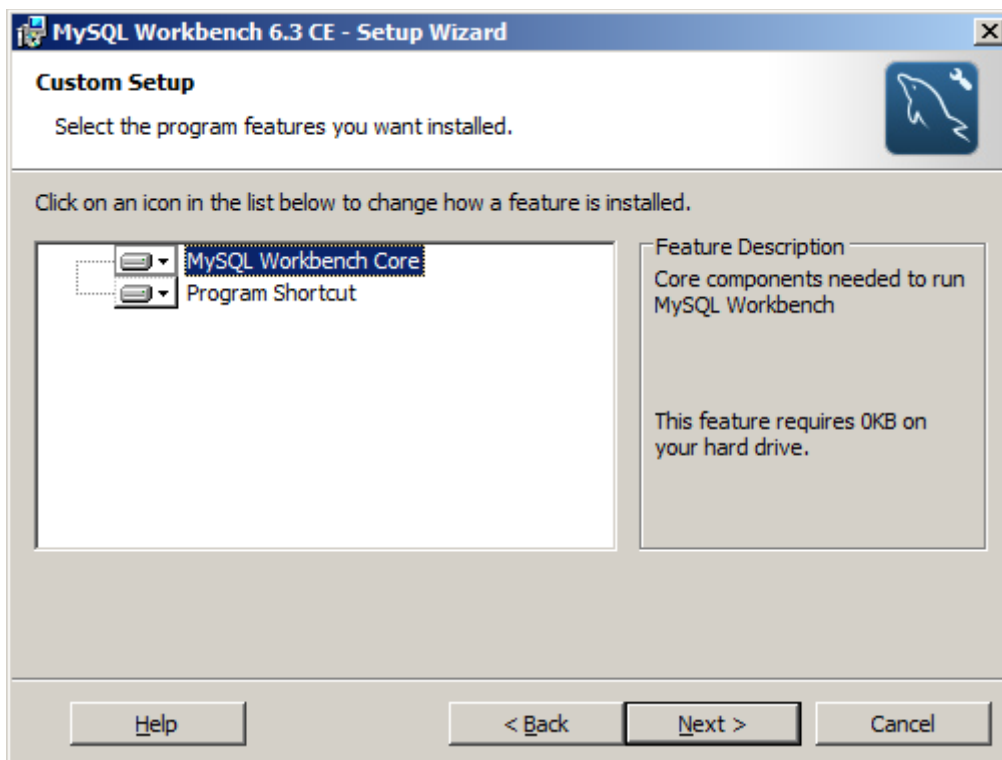


Installing MySQL Workbench

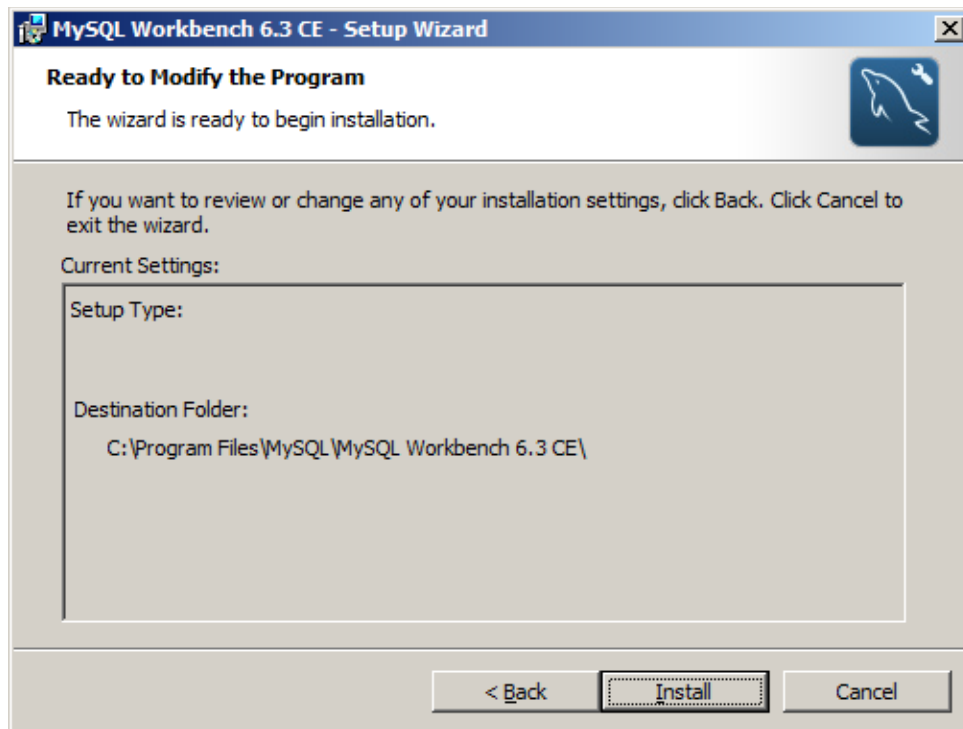
Navigate to the downloaded MySQL Workbench software, typically *mysql-workbench-community-6.3.8-win32.exe*, and run it.



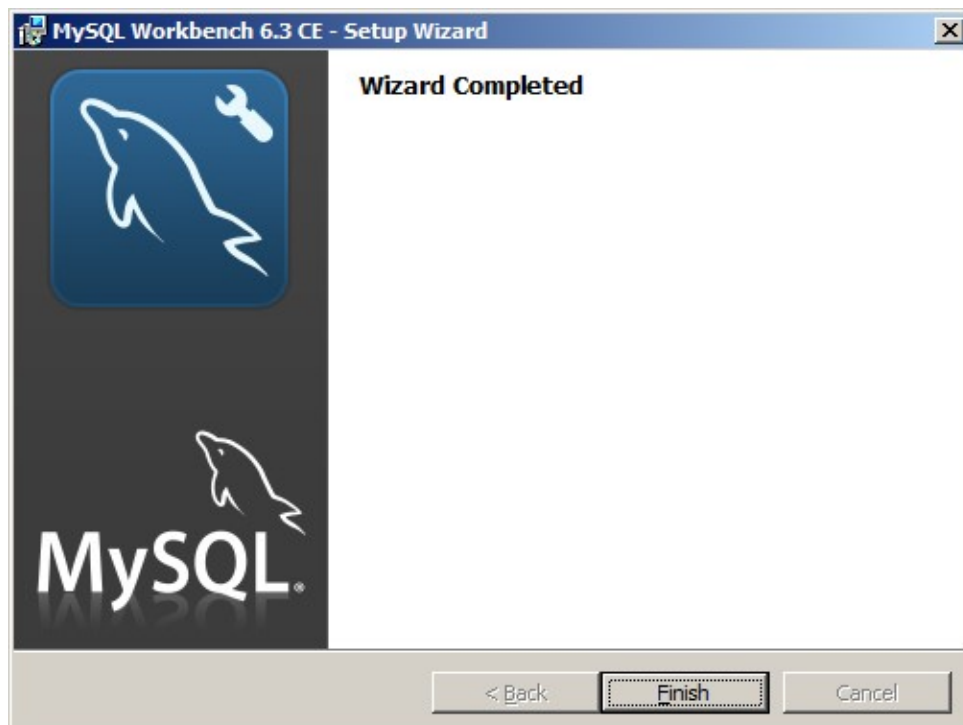
Click *Next*.



Click *Next*.

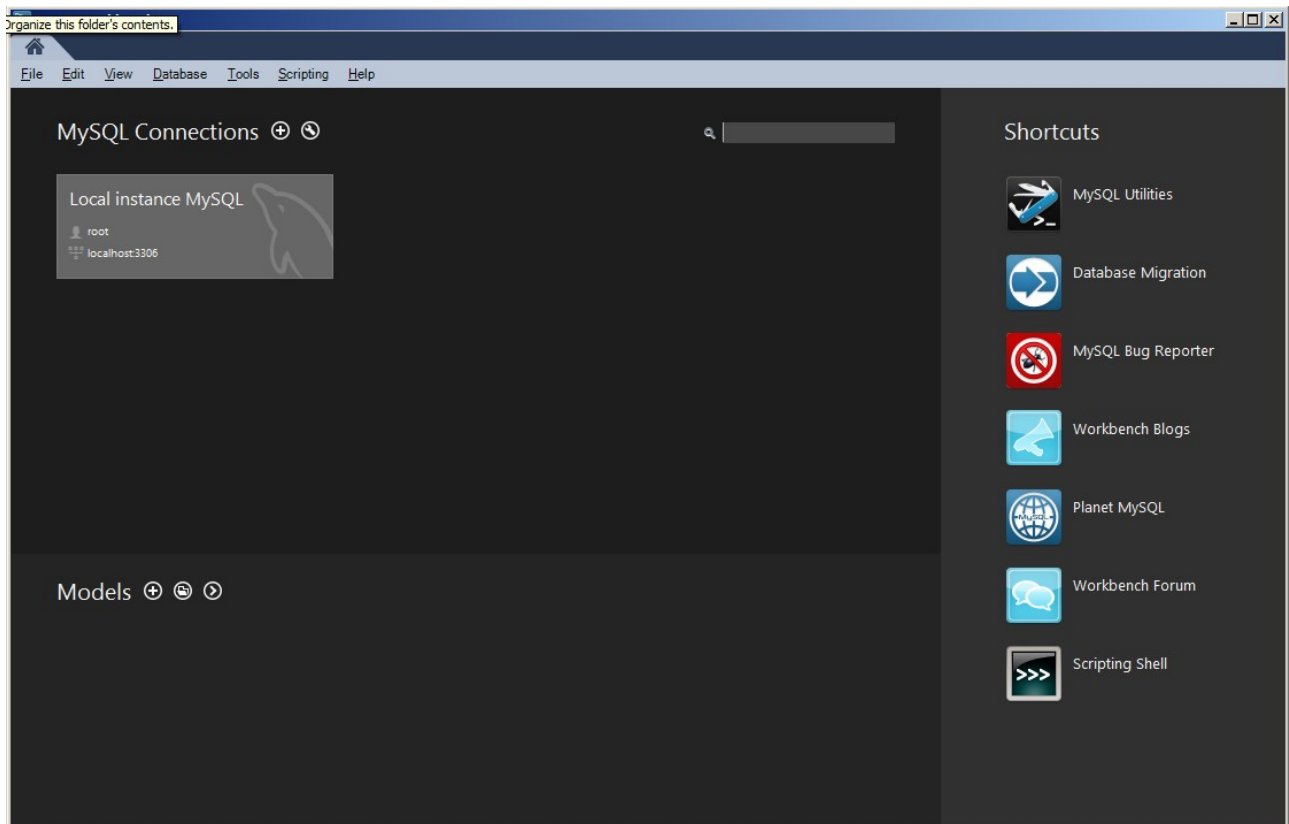


Click *Install*. The installation will only take a few moments then the **Completed** screen will be displayed.

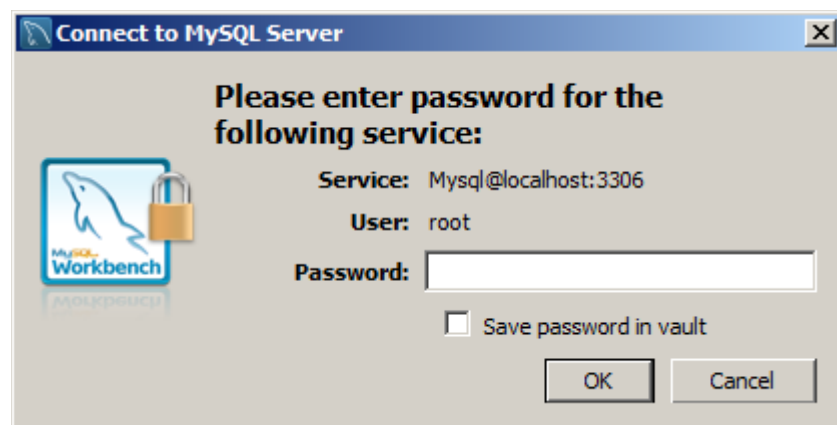


Creating and Populating the Harvester Database

Open the MySQL Workbench application.

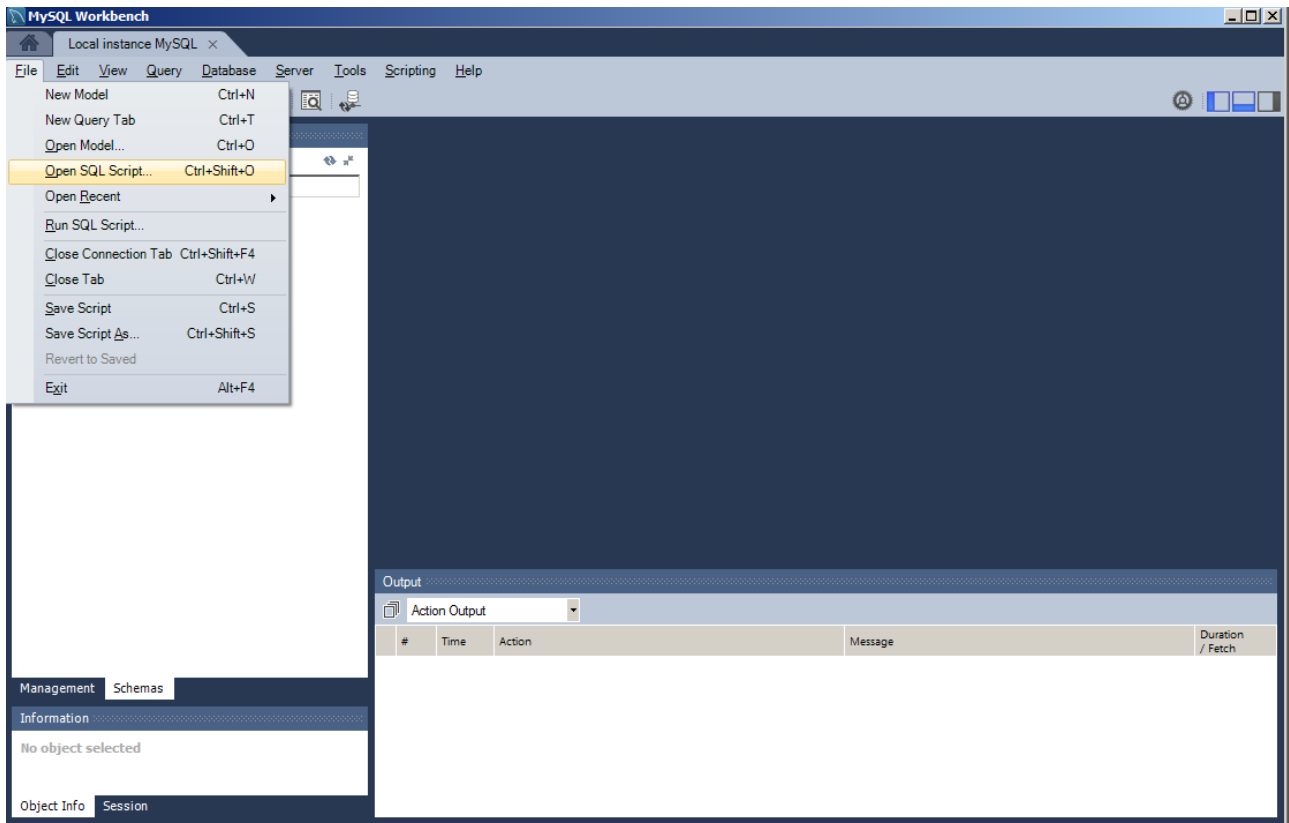


Click on the *Local Instance MySQL* box to log into the local database.



Enter the root password to that set when you were installing the database and click *Ok*.

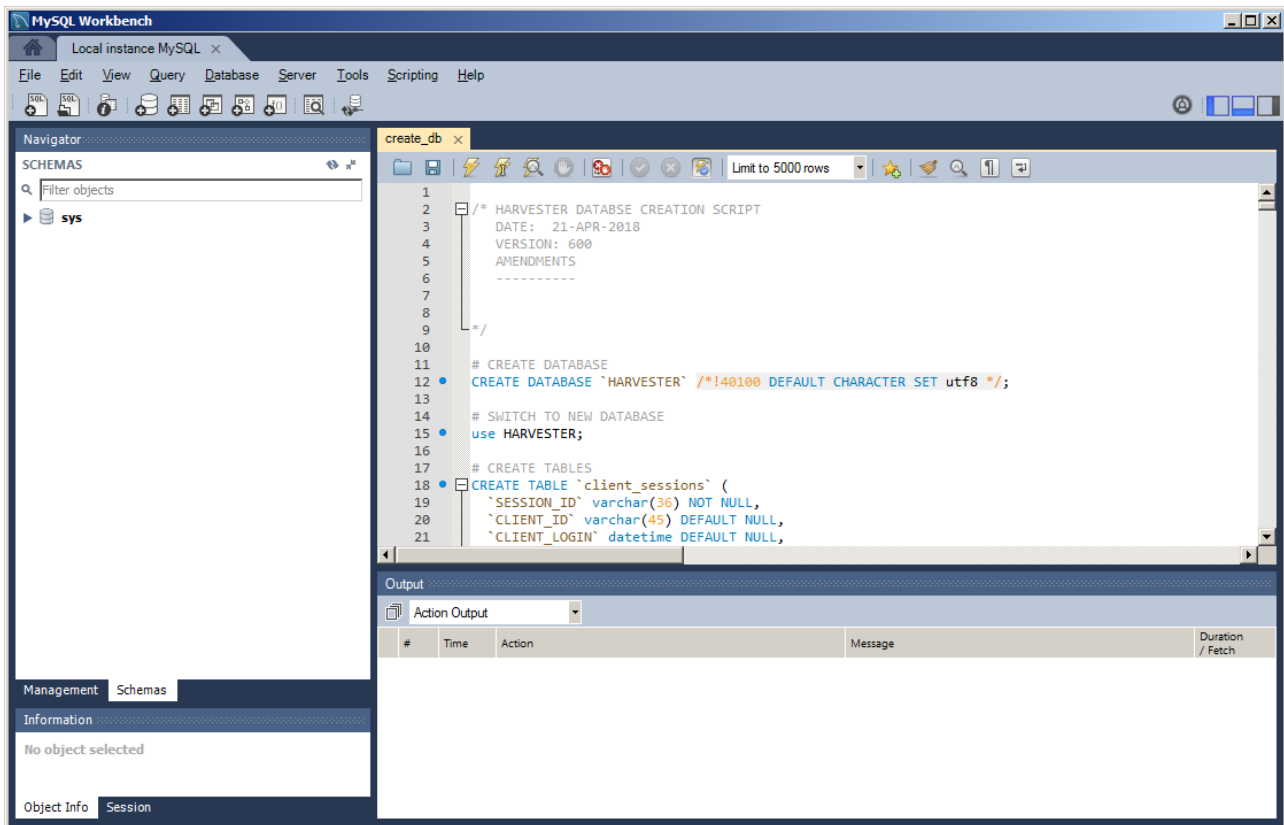
Once Workbench is open, navigate to the *Open SQL Script* in the the *File* menu.




In the file dialog box, navigate to

C:\Program Files (x86)\SIGINT Systems\Harvester\resources\setup\database

and open the *create_db.sql* file.



Once the file is open, click the *Execute* icon  on the toolbar.

This will create the new HARVESTER database. Next open and execute the *populate_db.sql* file. This will build all the narrative tables that HARVESTER requires to run.

Once this is done, the MySQL has been successfully installed and the HARVESTER has been successfully created.

You can now run HARVESTER for the first time!